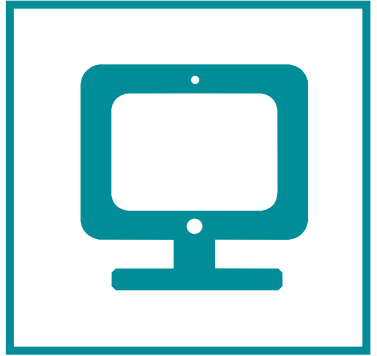
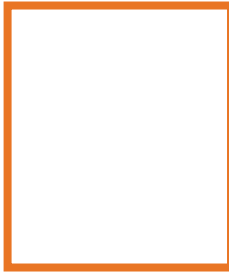




NYU

Wasserman Center
for Career Development



Graduate Career Outcomes Survey

Class of 2020



Table of Contents

2 Introduction and Overview

Methodology

Missing Values/Rounding

3 Career Outcomes

3 Employment

Position Type and Industry

Employment Location

5 Continuing Education

5 Career Development

5 Conclusion



Introduction

The New York University Wasserman Center for Career Development conducted its 2020 Graduate Career Outcomes Survey, which captures the career outcomes of NYU students who graduated with a Master's degree, Doctoral degree, or an Advanced Certificate, from the schools listed below, between July 1, 2019 and June 30, 2020. This timetable is consistent with the [National Association of Colleges and Employers' recommendations](#). The goal of this survey is to gain an understanding of graduates' employment and ongoing education activities.

Career outcomes for graduate students are impacted by many of the factors tied to the university setting including academic program selection, on-campus involvement/networking, and career development activities. In addition, these outcomes may also be impacted by factors not tied to the university setting including prior work experience, a broader network of professional colleagues, and current employment upon the start of a degree program. This report summarizes the findings from the Class of 2020.

Overview

METHODOLOGY

The survey questions were based primarily on the NACE standards, with minor adjustments to include school-specific post-graduate survey questions. Graduates were first sent a link to an online survey via email. In addition, the Wasserman Center for Career Development implemented two phone banks to outreach to recent graduates in early Summer 2020 and Fall 2020, as well as two text messaging campaigns. For those who did not respond to either the repeat emails or phone inquiries, NACE-approved professional networking sites such as LinkedIn were used to obtain post-graduation status data. Additionally, the Wasserman Center included data from Handshake, the National Student Clearinghouse, the Office of Global Services, and outcomes information reported by faculty, staff and employers.

In order to incentivize graduates to take the survey, the Wasserman Center offered a chance to win Apple AirPods and a Bluetooth speaker to those recent graduates who completed the survey within the administration period. Additionally, the Wasserman Center included data from Handshake, the National Student Clearinghouse, Office of Global Services, and outcomes information reported by faculty, staff and employers.

The target population consisted solely of individuals who, based on the official records from the university student information system, received an advanced degree (Master's or Doctoral degree) or an Advanced Certificate in either September 2019, January 2020, or May 2020 from the following schools:

Gallatin School of Individualized Study
Graduate School of Arts & Science
Rory Meyers College of Nursing
School of Global Public Health
School of Professional Studies
Silver School of Social Work
Steinhardt School of Culture, Education, and Human Development
Tandon School of Engineering including Center for Urban Science and Progress

Information on **4461** graduates who obtained an advanced degree and/or an Advanced Certificate was collected and analyzed. The list of graduates contained records for **7062** degrees conferred to **6956** graduates. Thus, Wasserman was able to collect post-graduate outcomes information on **64.1%** of the Class of 2020.

MISSING VALUES/ROUNDING

Throughout the analyses, "missing values" (i.e., questions that the respondents did not answer) were omitted, as were "Unsure" or "Unknown" responses for most calculations. As illustrated in several charts, the total percentage does not equal 100% due to rounding. Additionally, Institutional Research Board (IRB) guidelines prohibit us from requiring survey participants to answer all questions, so the number of responses to each question varies.

**DEMOGRAPHICS**

The students included in this report (survey sample) provide a proportionate representation of the makeup of NYU's Class of 2020 as illustrated below.

Population Breakdown BY DEGREE/CERTIFICATE		
	Survey Sample*	Overall Population
Master's Degree	92.3%	92.7%
Doctoral Degree	7.1%	6.5%
Advanced Certificate	.6%	.8%

*This is the population of graduate alumni, for whom we have information, broken down by degree type.

Career Outcomes**CAREER OUTCOMES RATE**

The career outcomes rate for the Class of 2020 is **93.6%**. The career outcomes rate is the total number of graduates who secured a position or enrollment in a continuing education program divided by the total number of graduates who sought opportunities. **4.1%*** of graduates included in the career outcomes rate reported continuing education as their career outcome. **90.3%*** of graduates included in the career outcomes rate reported employment as their career outcome. Of those, **68.8%** secured their jobs by or within 3 months of graduation.

* There is a small overlap in outcomes rate percentages as some graduates selected the response option to indicate that they are working and in school.

Career Outcomes Rate BY DEGREE/CERTIFICATE	
Degree Type	Percentage
Master's Degree	93.2%
Doctoral Degree	98.4%
Advanced Certificate	100%

Employment**POSITION TYPE AND INDUSTRY**

Employment was categorized into one of ten position types and one of thirty industries.

Position Type ALL RESPONDENTS	
Position Type	Percentage
Employed by an Organization	83.8%
Temporary/Contract Work Assignment	4.8%
Internship	3.7%
Entrepreneur	3.2%
Freelance (Independent contractor/consultants)	1.9%
Fellowship/Post-Doctoral Appointments	1.5%
Faculty non-tenure track position	0.6%
Faculty tenure track position	0.3%
Voluntary Service	0.3%
Other	0.1%

Top Industries ALL RESPONDENTS	
Industries	Percentage
Education/Teaching	18.6%
Health Care	17.4%
Computer Science/Technology	13.4%
Financial Services/Banking	8.0%
Non-Profit/Social Services	7.3%
Entertainment/Media	4.1%
Real Estate	4.0%
Marketing/Advertising/PR	3.3%
Science/Research	2.9%
Consulting	2.2%



The industries reported for Master's degree recipients are distributed across a variety of sectors, fairly comparably to all degrees. Position type is heavily concentrated in the Employed by an Organization category (**84.2%**).

Position Type MASTER'S DEGREE	
Position Type	Percentage
Employed at an existing organization	84.2%
Temporary/Contract Work Assignment	4.9%
Internship	4.0%
Entrepreneurial/Self-Employed	3.0%
Freelance	2.0%
Fellowship/Post-Doctoral Appointments	1.0%
Volunteer/Service Work	0.3%
Faculty non-tenure track position	0.3%
Faculty tenure track position	0.1%
Other	0.1%

Top Industries MASTER'S DEGREE	
Industries	Percentage
Health Care	17.1%
Education/Teaching	16.6%
Computer Science/Technology	13.9%
Financial Services/Banking	8.5%
Non-Profit/Social Services	7.8%
Real Estate	4.4%
Entertainment/Media	4.4%
Marketing/Advertising/PR	3.5%
Consulting	2.3%
Fashion/Retail/Consumer Products	2.3%

Doctoral graduates' position types and industries are heavily concentrated; the top three position types account for **over 90% (91.7%)** of placements. When compared to Master's degree graduates, education/teaching represents more than a third, **40.4%** (but less than half) of all placements and science/research rises to a top three position.

Position Type DOCTORAL DEGREE	
Position Type	Percentage
Employed at an existing organization	79.3%
Fellowship/Post-Doctoral Appointments	7.4%
Entrepreneurial/Self-Employed	5.0%
Temporary/Contract Work Assignment	2.7%
Faculty tenure track position	2.3%
Faculty non-tenure track position	1.7%
Freelance	0.7%
Internship	0.3%
Volunteer/Service Work	0.3%
Other	0.3%

Top Industries DOCTORAL DEGREE	
Industries	Percentage
Education/Teaching	40.4%
Health Care	18.6%
Science/Research	13.0%
Computer Science/Technology	8.1%
Pharmaceutical/Biotech	3.2%
Financial Services/Banking	2.8%
Non-Profit/Social Services	2.1%
Consulting	2.1%
Entertainment/Media	1.4%
Government/Military	1.4%

The reported industries for graduates who earned Advanced Certificates are reflective of their area of study.

Position Type ADVANCED CERTIFICATE	
Position Type	Percentage
Employed at an existing organization	67.3%
Entrepreneurial/Self-Employed	12.2%
Internship	6.1%
Temporary/Contract Work Assignment	6.1%
Freelance	4.1%
Faculty non-tenure track position	2.0%
Fellowship/Post-Doctoral Appointments	2.0%

Top Industries ADVANCED CERTIFICATE	
Industries	Percentage
Health Care	37.5%
Education/Teaching	29.2%
Transportation/Warehousing	20.8%

EMPLOYMENT LOCATION

94.1% of domestic and **92.9%** of international graduates reported an outcome of employed or employed and continuing education. Of those who reported both employment and an employment location, **98.8%** of domestic and **81.0%** of international graduates remain in the United States.



Continuing Education

4.1% of graduates reported an outcome of continuing education. Of the number of graduates reporting this outcome, **49.5%** were domestic and **50.5%** were international graduates. The continuing education breakdown by degree and certificate level is included in the table below. This is the proportion of those who are continuing education and/or working and continuing education as a proportion of all outcomes types.

Continuing Education BY DEGREE/CERTIFICATE	
Degree Type	Percentage
Advanced Certificate	7.4%
Doctoral Degree	2.9%
Master's Degree	4.2%

Career Development

Overall, **71.5%** of graduates used Wasserman Center resources to support their career development during enrollment. Services include individual career coaching appointments, career development workshops, events and access to the many Wasserman Center career resources available to students. **73.7%** cited using an NYU resource in helping them to secure their post graduate outcome. Specifically, **76%** of Doctoral graduates and **73.5%** of Advanced Certificate graduates and Master's graduates used an NYU resource to secure their outcome. These NYU-related resources include the Handshake career development platform, the On-Campus Recruitment program, Career Fairs, NYU staff members, employer presentations, NYU events, NYU career emails, online mentor databases, and promotions from positions secured through NYU.

Conclusion

New York University graduates are among the most successful in the country and are perceptive, experienced, and well-prepared for their lives beyond NYU. Our graduate outcomes rate for the Class of 2020 is **93.6%**. We saw a slight decrease in our graduate student outcomes rate when compared to the Class of 2019 (**95.7%**) and we attribute this to many factors, most notably the impact of COVID-19 on the job market for recent graduates. There is an increase in the number of recent graduates who are seeking employment and seeking continuing education compared to prior years. This is on par with analysis by the Department of Labor Statistics, which marked the national unemployment rate at 13%¹ in May 2020, when the majority of the Class of 2020 were entering the workforce.

The NYU Wasserman Center for Career Development partners with academic departments, employers, and the entire University community to support students and alumni through strategically planned initiatives, career education programming, and development of and connections to resources. It is our mission to empower our students and alumni to succeed at every stage of their career by creating opportunities for them to develop the skills, experiences, and connections they need to thrive in a dynamic global economy.

¹ Unemployment rates were higher in May than a year earlier in All 389 metropolitan areas. (2020, July 09).