

Does Your Project Require an Application to the NYU IRB Office?

Decision Tree #1

Will you, a member of your research team or a collaborator observe, interact with, or intervene with individuals to gather information that will be used for research? Examples:

- Surveys, questionnaires, focus groups, interviews
- Games, experiments in physical or in electronic environments
- Physical or biomedical procedures – imaging, scanning, blood collection, anthropomorphic procedures
- Diet, nutrition studies, taste tests
- Studies examining effectiveness of educational tools or curricula
- Use of instruments or devices, including phones, to collect data or monitor or influence behavior
- Passive observation of public behavior (in physical or online environments, including social media)
- Studies examining individuals' responses to manipulation of their physical or online environment
- Another activity that involves observation of, or interaction with, individuals to gather information for research

NO,
research will use
only existing data

Refer to IRB Decision
Tree #2 on Existing/
Secondary data

**Not human subjects research. No
application to the IRB office is needed.**

**Not human subjects research. No
application to the IRB office is needed.**

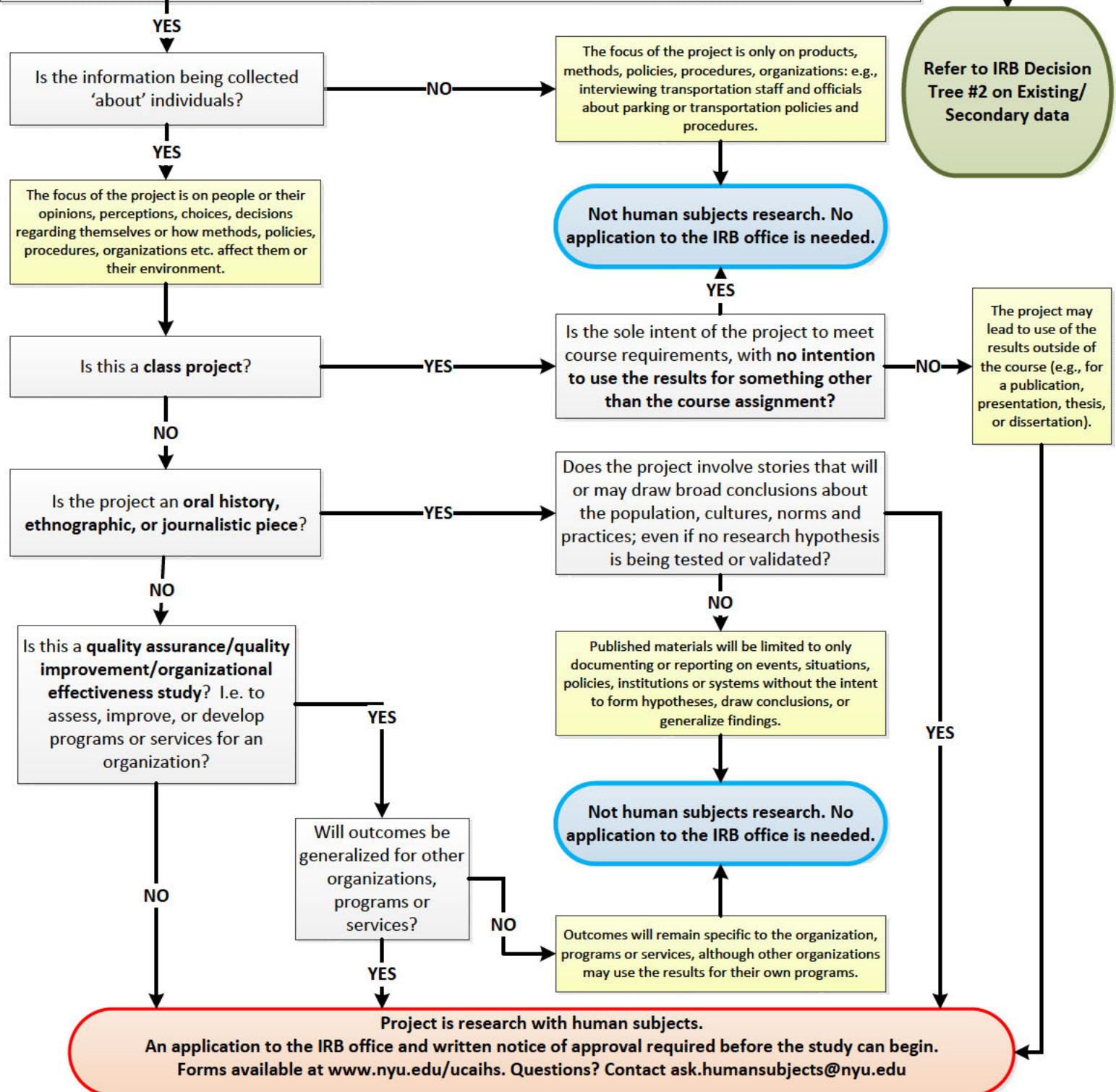
**Not human subjects research. No
application to the IRB office is needed.**

The project may
lead to use of the
results outside of
the course (e.g., for
a publication,
presentation, thesis,
or dissertation).

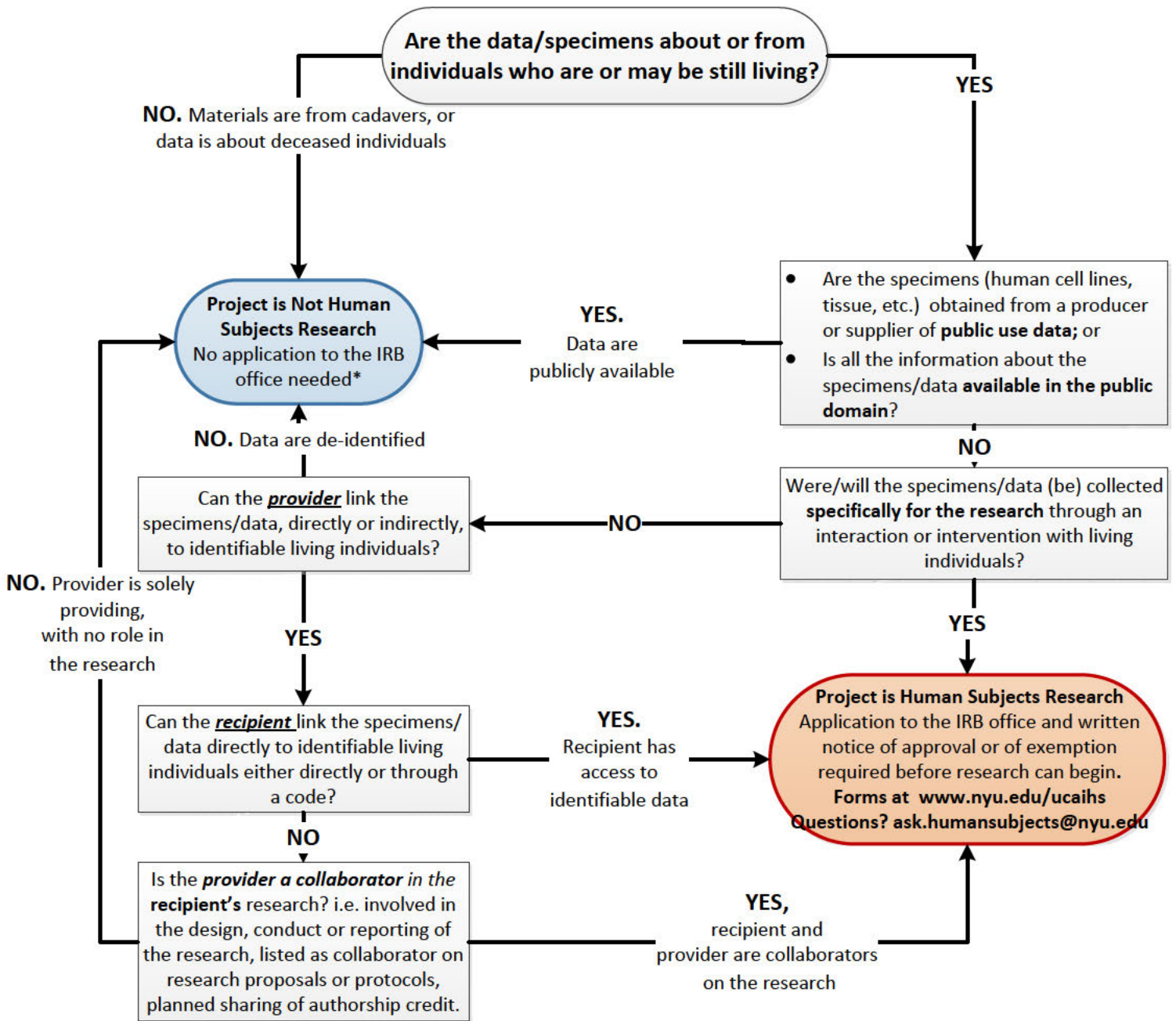
YES

Project is research with human subjects.

**An application to the IRB office and written notice of approval required before the study can begin.
Forms available at www.nyu.edu/ucaih. Questions? Contact ask.humansubjects@nyu.edu**



**Does Your Research Involving Secondary or Existing Data, Documents or Biological Specimens
Require Review by the NYU IRB Office?
Decision Tree #2**



*Contact the Office of Sponsored Programs at osp.agency@nyu.edu if acquiring the data requires a Data Use Agreement or a Materials Transfer Agreement between the provider and recipient.
Reference: "Research Involving Private Information or Biological Specimens Flowchart", National Institutes of Health (NIH), January 2006, <https://grants.nih.gov/grants/policy/hs/PrivateInfoOrBioSpecimensDecisionChart.pdf>