

# February 2012 Benefits Update

---

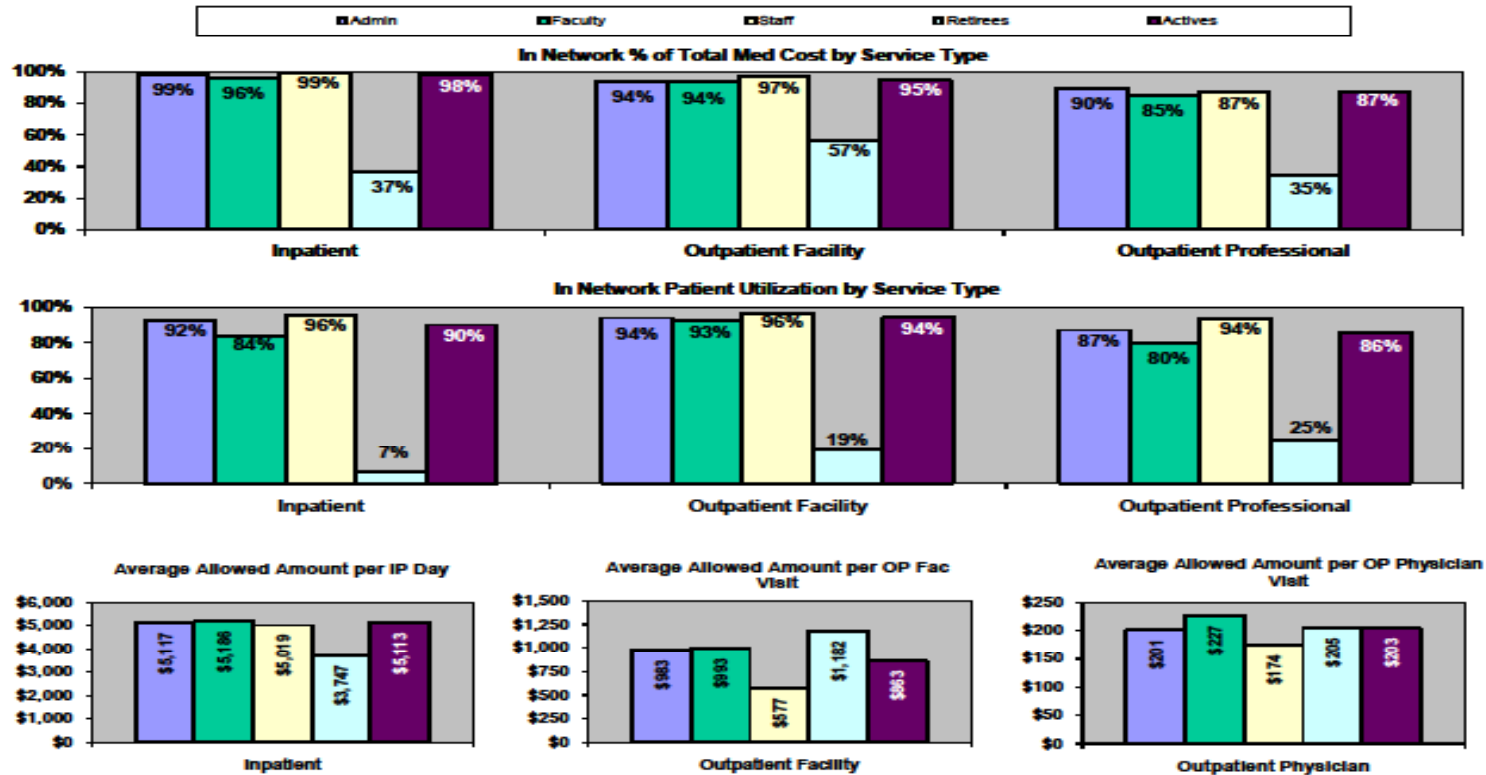
- Health Risk Assessment (HRA)
  - Will review option of using current insurers' HRA product or separate entity
  - Anticipate implementing in 2013
- Retiree Wellness Screenings
  - Included retirees in the cholesterol, derma scan and bone density screenings for Spring (Jan – April)
  - Enrollment Stats: Cholesterol 11, Derma Scan 12, Bone Density 12
- Flexible Spending Account (FSA) balance information- TBD
  - Waiting until 2011 claims incurred period ends in mid-March
  - Have until end of June to submit for reimbursement
- Benefits Survey
  - Still being discussed
- In network physicians statistics
  - See next page for summary report



# In Network Statistics

## NYU Annual Report - Network Utilization

Previous RY: Incurred Jan 2009 - Dec 2009; Paid through Mar 2011  
 Current RY: Incurred Jan 2010 - Dec 2010; Paid through Mar 2011



Prepared by Thomson Reuters



# Benefits Update con't.

---

- Carebridge Employee Assistance Program
  - Conducted re-education/training program at January 26 Human Resources Officer (HRO) meeting
  - Coordinating additional line management training
- Colorectal vs Colonoscopy
  - Testing is the same but the reason for the test determines the benefit
    - Screening = preventative, covered at 100% in network
    - Medical reasons = outpatient surgery, subject to deductible and co-insurance

