

IDENTITY: PRESENTATION



Using the templates provided, you can confidently create presentations knowing that your layouts are compliant to current standards and guidelines. In addition, the collective value of university-wide templates will communicate professionalism and reinforce your relationship with the University.

Templates can be downloaded at nyu.edu/styleguide.

GUIDELINES

You may use the electronic presentation templates provided, but they are not required.

Do not change the size, color, or position of the logo or its purple background (first slide) or purple bar (all following slides).

Below the purple bar, feel free to design the presentation to better meet your needs.

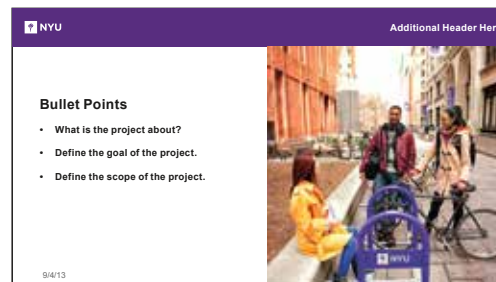
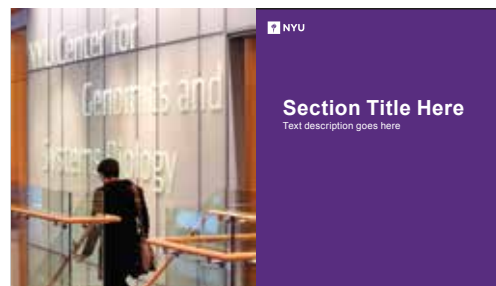
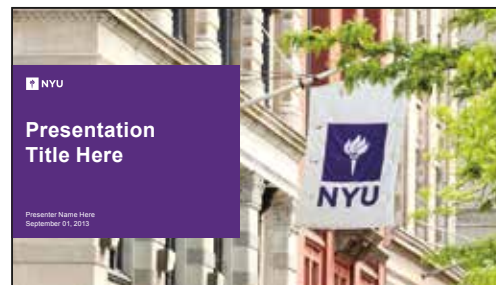
Changing the photography to make it your own is encouraged, but understand that professional photography will make for a better impression.

For guidance finding professional NYU stock photography email the Photo Bureau at photo.bureau@nyu.edu.

For more information, please email urpa.styleguide@nyu.edu.



UNIVERSITY-WIDE



SCHOOL SPECIFIC

