



# WHAT WE'LL COVER

- **Welcome, Introduction and Overview**
- **About Berlin**
- **What you need TO DO BEFORE you go**
  - Required Forms
  - Visa/Residency Permit
  - Courses and Registration
- **Life at NYU in Berlin**
  - NYU Academic Center and Staff
  - Arrival Day and Orientation
  - Traveling and Excursions
  - Housing
  - Student Support
  - Health and Wellness
  - Culture Shock
  - Final Tips



# ABOUT BERLIN



- Germany's capital and largest city
- Multicultural city with a large immigrant population (Turkish being the largest)
- Multilayered history
- World class museums, theatres, operas
- THE place for contemporary art and cutting edge galleries
- Tons of entertainment – cafés, museums, galleries, nightclubs, shopping, etc.
- True crossroads between East and West!



# What you need TO DO BEFORE you go



# RESOURCES

## First things first...

Have you turned in your **Confirmation Form** and **deposit**?

Do you know who your NYU in Berlin **site rep** in NYC is?

Have you looked at the **Admitted Students web site** for NYU in Berlin?

Have you been reading your **“What’s Next? Berlin”** E-mails/Blog?



# REQUIRED FORMS



## Web Forms:

- Housing
- Arrival/Flight
- Passport
- Emergency Contact
- Insurance

## Paper Forms:

- Travel Release
- Medical History

## NYUTraveler:

- Flight Information

**All forms due by December 1<sup>st</sup>!**

# VISA/RESIDENCY PERMIT

**ALL students must submit the following items to the site rep in New York by December 10<sup>th</sup>!**

- Copy of a valid U.S. Passport/E.U. Passport/US alien registration card
- Filled out applications for residency permit and student visa
- Proof of financial resources\*
- Proof of health insurance (HTH Letter is OK)

Once you arrive in Berlin our staff will help you obtain the following items:

- Two biometric photos
- Copy of Humboldt University registration

\* This is a letter that states that your parent/guardian will take financial responsibility for you and that at least 700 Euros are available to you each month. Attach a copy of parent's/guardian's passport or driver's license to the letter.

# REGISTRATION

You must register on Albert for **12 – 18 credits.**

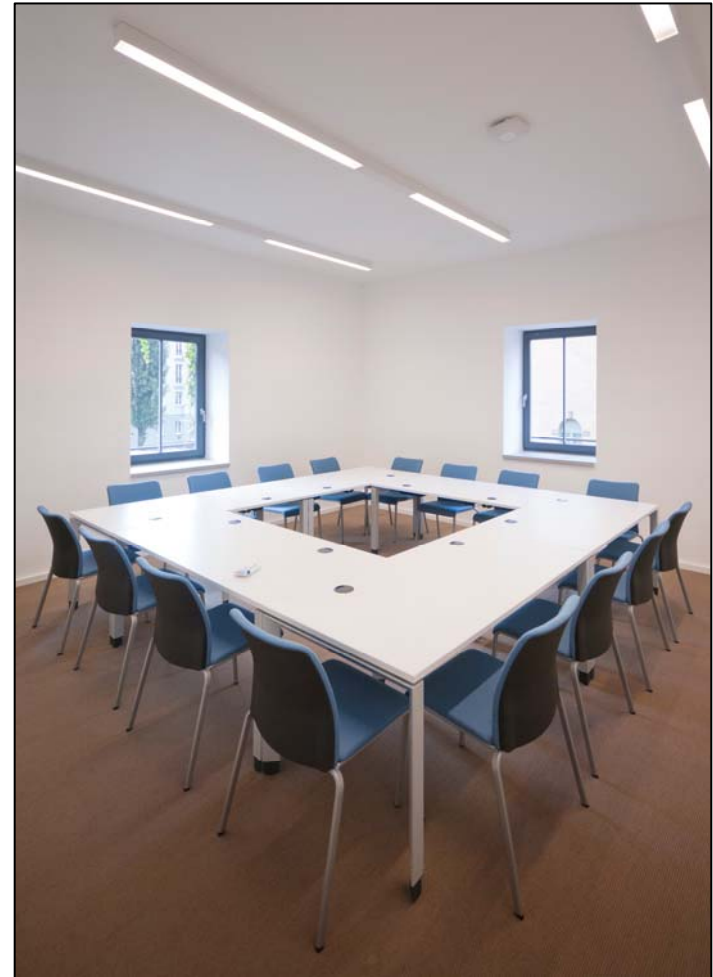
Don't forget to register for a German language class!

German placement test given upon arrival. All levels offered.

Add/drop period during first two weeks for fine-tuning schedule.

Classes take place at the NYU academic center. Classes are small.

Most books are available to buy in Berlin.



# COURSES

## MANDATORY GERMAN CLASS!

Elementary German I or II

Intermediate German I or II

Advanced German

### Subjects include:

European Studies

Sociology

Film Studies

Philosophy

Metropolitan Studies

Art & Art History

Politics

German

Studies



See complete course list at: [www.nyu.edu/studyabroad/berlin/academics/html](http://www.nyu.edu/studyabroad/berlin/academics/html)



# LIFE AT NYU BERLIN



# NYU CENTER



NYU in Berlin's Academic Center is located at in a converted former brewery complex in the district of Prenzlauer Berg

Multiple Stories

Classrooms, Offices, Lounge, Reading Room

Computer Lab

Studio Art Space

# NYU IN BERLIN STAFF



Dr. Gabriella Etmektsoglou  
*Director NYU Berlin*



Dr. Stefan Blechschmidt  
*Associate Director NYU Berlin*



Franka Ellman  
*Student Services Coordinator*



Meret Hofer  
*Student Services Coordinator*

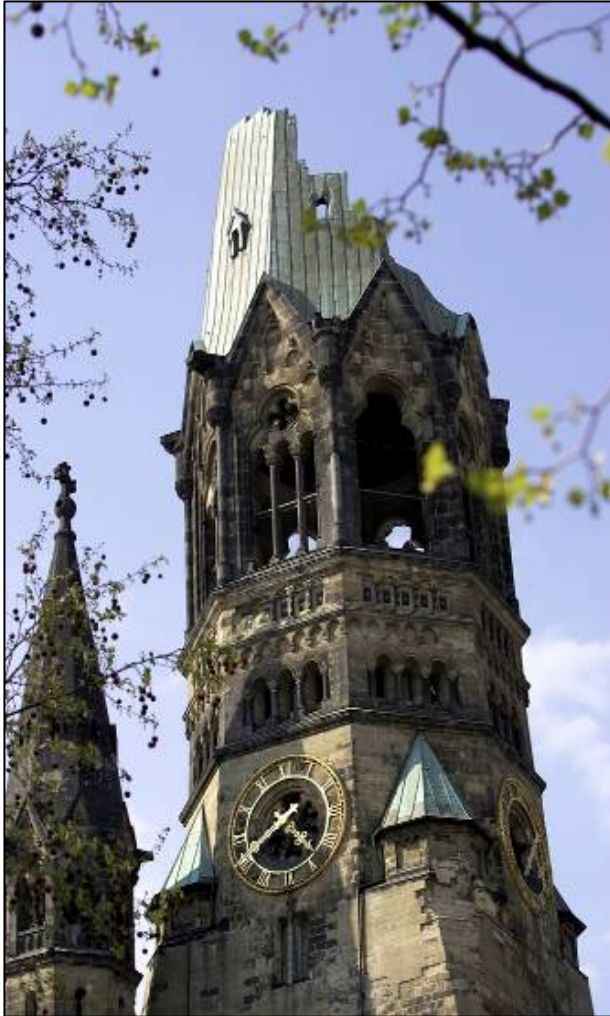


Denise Specht  
*Language Coordinator*



Carolyn Ludwig  
*Resident Assistant*

# ACADEMIC CALENDAR



February 3 <sup>rd</sup> :	Arrival Day
February 3 <sup>rd</sup> – February 6:	Orientation
February 7 <sup>th</sup> :	First day of classes
April 16 <sup>th</sup> – April 26 <sup>th</sup> :	Spring break
May 27 <sup>th</sup> :	Last day of classes
May 29 <sup>th</sup> :	Student departure

Please note:

Students arriving before February 3<sup>rd</sup> or staying after May 29<sup>th</sup> are responsible for arranging their own accommodations.

As schedule is subject to change, do **NOT** make any travel plans until you have arrived in Berlin.

# ARRIVAL

- Arrival day is FEBRUARY 3<sup>rd</sup>.
- Airport pick-up for group flight
- Late arrival is NOT permitted.
- Have important documents on you (passport, letter).
- Have NYU in Berlin contact information on you.
- Don't forget to call home once you arrive!



**NOTE: ONCE YOU GET TO THE APARTMENTS, REGISTER WITH THE NYU IN BERLIN RA TO PICK UP YOUR APARTMENT KEY**

# ORIENTATION

## ORIENTATION IS MANDATORY!

Topics covered:

- Staff & Faculty Introduction
- Cell Phones
- Courses
- Transportation
- Banking
- Safety/Emergencies

Orientation occurs during the first few days. An orientation schedule will be posted on NYU in Berlin Blackboard.



# EXCURSIONS



## Excursions:

Daytrips and weekend trips

Previous destinations have been Dresden, Leipzig, and Hamburg

## Cultural Programming:

“Stammtisch” with German students

Language tandem

*Note: Excursions and cultural programming are optional and are usually included in the program cost. Students who choose not to participate cannot be given a refund.*

# HOUSING

**STUDENTS ADMITTED TO THE PROGRAM MUST LIVE IN NYU-PROVIDED HOUSING**

NYU in Berlin is currently locating new student housing options. They will include

Wireless Internet

Fully furnished and equipped rooms

Laundry and linen service

100 Euro deposit upon check-in (returned upon successful check-out at the end of the semester)



**NOTE: IT IS NOT POSSIBLE TO MOVE IN EARLY OR STORE ITEMS IN THE APARTMENTS BEFORE THE PROGRAM BEGINS. NO EXCEPTIONS!**

# STUDENT SUPPORT

- NYU in Berlin staff has office hours at the Academic Center and is available 24 hours for emergencies.
- In addition to excursions, the staff plans cultural events throughout the semester.
- Humboldt's International Office organizes various events for you as well, so you can engage with local students.
- You are granted access to Humboldt's facilities (libraries, dining halls, computer labs and cafeterias)



# HEALTH & WELLNESS



- Students with special needs, academic or other, must inform the NYU Moses Center for Students with Disabilities in advance.
- Medications and their costs vary from country to country. Some medications are not available in certain countries.
- Know both the generic and brand name of your medicine.
- Shipping medication to Germany is not legal. Avoid it! If you take prescription medication, bring enough for the entire semester.
- Remember the NYU Wellness Center is available while you are abroad.

# HTH WORLDWIDE HEALTH INSURANCE

- Free international health coverage courtesy of NYU.
- No out of pocket payment to see a doctor/health care provider.
- Credentialed, western trained, English-speaking doctors. List of doctors posted on HTH Web site.
- 24/7 hotline & Crisis Response available.
- Not to replace your domestic insurance. You'll need to have coverage in the US as well!
- You MUST register with HTH (once they e-mail you).
- Never hesitate to consult the NYU in Berlin staff if you need help getting medical care!

# CULTURAL ADJUSTMENT

## What is CULTURE SHOCK?

- The emotional highs and lows that come with living overseas.
- When things that first seemed exciting or exotic start to feel overwhelming or frustrating.
- Feeling like where you live isn't "home" or a comfortable place.
- The feeling that things that should be easy to do (like buy stamps) are difficult, frustrating, or exhausting.



## What are the symptoms?

- Mood swings
- Homesickness
- Overreacting to trivial events
- Needing more sleep
- Excessive criticizing of host country

# CULTURAL ADJUSTMENT

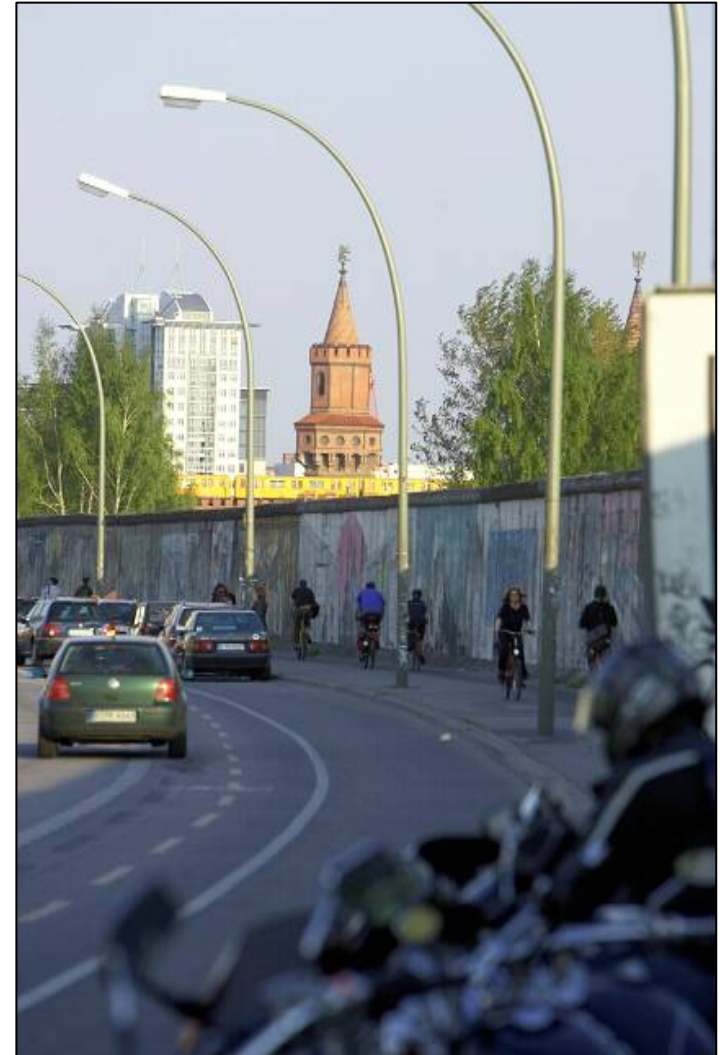


## Coping Techniques:

- Become very familiar with your new culture: watch movies, read books, learn about the political system, etc.
- Keep in touch with family and friends, but only minimally. Don't talk/email everyday - it could make you more homesick.
- Try to understand cultural differences even if they remain unnatural to you. Figure out WHY things are how they are and it might make more sense.
- Keep a journal of your thoughts to help process what you are experiencing.
- Expect culture shock to happen. It is normal, and just means that something profound is happening in your life – that's a good thing!

# FINAL TIPS

- Learn how to say some common phrases in German (hello, please, thanks, etc).
- **PACK LIGHTLY!** Don't bring appliances like hair dryers, flat irons, etc. They will burn even if using an adaptor because the voltage is much higher in Europe than in the US!
- Be prepared to have challenged what you take for granted.
- Be aware of what's around you. **ALWAYS** stick to the **buddy-system, especially at night.**
- Bring your laptop. Internet may be a lot slower than you're used to.
- Flexibility is key. Things don't always go as planned. Make sure you always have a back-up plan.



# BIS BALD IN BERLIN!

