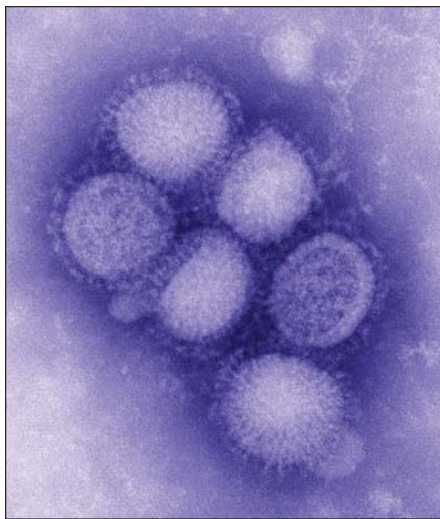




Everything you want to (or don't want to) know about **H1N1** influenza



An Expert Panel Discussion

- *Why did H1N1 appear? What can we expect?*
- *What are the key symptoms?*
- *What target groups are impacted by H1N1 flu - and why?*
- *What are NYU's strategies to contain and mitigate the impact of flu?*

PANELISTS:

Carol Shoshkes Reiss, Ph.D.
*Professor, Department of Biology
College of Arts and Sciences, NYU*

Martin J. Blaser, M.D.
*Frederick H. King Professor of Internal Medicine
Chair, Department of Medicine
NYU Langone Medical Center*

Carlo Ciotoli, M.D.
*Deputy Executive Director and Medical Director
NYU Student Health Center*

**Tuesday, Nov. 3
5:00 - 6:30 p.m.**

**Kimmel Center, Room 914
60 Washington Sq. South**

*Open to NYU Faculty,
Staff, and Students.*

Co-sponsors:

Student Senator's Council (SSC) and Student Health Advisory Board of the SSC