



April-May 2008

**Stay Tuned:**

June-July Features:  
Sustainability and  
Carpeting

Volume 1, Issue 2



# NYU Green Room

## Certification Criteria:

Climate Cool



Cradle to Cradle



Fair Trade



Energy Star



SCS



Green Guard



LEED



## ECO Dorm to the rescue.

By Giselle Graham –NYU- Purchasing Services

All students currently living on NYU's campuses can attest to the fact that the dorm room is not only their second home but a safe haven to retreat to each day. Half of their college life is spent within the confines of those four walls, so it is important that furniture and finishes not only meet the challenge of rigorous use but also not have a negative impact to their health and well being.

NYU has a long standing relationship with [Adden Furniture](#), a company committed to the manufacture of environmentally responsible dorm products. "Their most sustainable attribute can be found in the life cycle

of their products. Their furniture is designed to endure challenging living, learning, and healing environments for 25 to 50 years. They utilize North American hardwood to construct their furniture. 94 percent of North American hardwood is privately-owned, managed, and continually replenished. They do not use any rainforest materials. Any company we use to furnish our rooms and facilities must conform to re-forestation regulations". In August 2005, Adden Furniture collaborated with Rhode Island School of Design (RISD) to create the "Sage" collection. This product line incorporates sustainable harvested woods such

as Bamboo solids and veneers and solid beech to create a very modern take to a classic style.



*Adden "Two Position" Arm Chair-Combines durability and versatility all in one.*  
[www.addenfurniture.com](http://www.addenfurniture.com)

### Green Organizations

- AASHE– Association for the Advancement of Sustainability in Higher Education– [www.aashe.org](http://www.aashe.org)
- USGBC– U.S. Green Building Council– [www.usgbc.org](http://www.usgbc.org)
- HEASC-Higher Education Associations Sustainability Consortium– [www.heasc.net](http://www.heasc.net)
- NYU-Sustainability– [www.nyu.edu/sustainability](http://www.nyu.edu/sustainability)



*Adden-Classic platform bed*



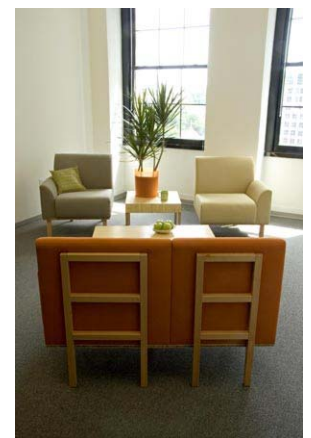
*Adden-Sage– platform Bed*



*Adden– Classic Desk*



*Adden-Sage– Desk and Chair*



*Adden– Sage– Lounge Seats*

## Recycle, Reuse, Refuse? Sleep on it!

By Giselle Graham –NYU- Purchasing Services



*Mattress Burial Ground*

"You must be the change you wish to see in the world."

— Mahatma Gandhi

The mattress is an important and necessary addition to the room. Traditionally, a dorm room mattress has a life span of approximately two-years before they need to be replaced.

University Sleep Products is one of NYU's premier manufacturers for dorm room mattresses. ([www.universitiesleep.com](http://www.universitiesleep.com)). They have developed a new mattress called the "Enhanced Style B" with inverted seams to prevent bed bugs which in turn increases the life span to 5 years. These mattresses are certified to pass the most stringent burn testing available, and with their new SOFlux OX covering, the passage of any biohazardous materials are completely blocked from entering the inner mattress.

But, what happens to the mattress at the end of its life? Most of them end up trashed. Unfortunately, based on unavailable options, universities have very little choice but to buy disposable beds. The U.S. landfills are currently not

equipped to handle the amount of mattresses hauled to the locations each year.

Conigliaro Industries ([www.conigliaro.com](http://www.conigliaro.com)) is one of only four mattress recycling facilities in the US. This recycling process requires funding and time to maintain capital equipment and research. If you were to tear down a mattress to its fundamental parts, the need for storing it in a landfill or in a warehouse is no longer an issue. By recycling mattresses, you will eliminate the need to store them which benefits the environment as well as other businesses that may have use for the salvaged materials. A standard mattress and box spring consist primarily of steel, polyurethane foam, cotton and other fabric, and wood. Good recycling markets usually exist for the steel portion.

All mattresses that are not considered hazardous waste currently can be donated and reused in disas-

ter relief and economic development in the US and overseas. The Institution Recycling Network is a cooperative, member-led organization that offers assistance nationwide in managing surplus property ([www.ir-network.com](http://www.ir-network.com)). Mark Berry, Surplus program Manager for IRN, stated that last May, 1635 pieces of dorm furniture totaling 151,180 pounds were donated from colleges in the North East to Spanish Town, Jamaica for areas affected by Hurricane Dean.

Of course, the ideal solution would be for the bedding industry to develop a zero waste manufacturing system. If the whole mattress could be recycled cost efficiently while still meeting the demanding fire safety and health requirements needed, the reduction of waste would be insurmountable.



A filleted mattress awaits further processing. PHOTO COURTESY OF CONIGLIARO INDUSTRIES

*Conigliaro Industries— Filleted mattress*



*University Sleep— Enhanced Style B mattress*



*University Sleep— SOFlux OX Covering*

## Dorm Accessories.....

By Giselle Graham –NYU- Purchasing Services

A few other necessary items are:

**Storage and collection of recyclables.** Public and private waste- bins for re- cyclables should be readily accessible.

**Fabrics with recycled content** – They must be able to withstand the harsh treatment of heavy use especially in high traffic areas such as lounges and cafeterias. Designtex, Carnegie, Arc|Com and Luna Textiles to name a few offers heavy duty recycled fabrics.

**Ultra-low-flow and flush fixtures** can save 20 to 30 percent in water costs. Consider a greywater system to flush the toilets with soapy water collected from the showers or by collecting rainwater from the roof. ([www.twoflush.com](http://www.twoflush.com)) and ([www.wdi-ecoflush.com](http://www.wdi-ecoflush.com)) both offer kits to retrofit existing toilets.

**Flooring-** As an alternative to using Hardwood or painted concrete flooring, try using environmentally conscious recycled rubber flooring such as ECOSurfaces Commercial Flooring. It is made entirely of post consumer recycled rubber and pre-consumer foam rubber ([www.ecosurfaces.com](http://www.ecosurfaces.com)) or sustainable high performance resilient sheet vinyl from Lonseal that offers anywhere from 20%-50% of recycled content ([www.lonseal.com/greenvinyl.cfm](http://www.lonseal.com/greenvinyl.cfm))

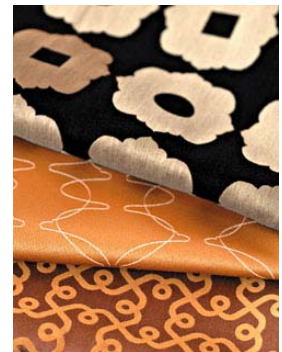
**Fluorescent Bulbs and Tubes** Despite the fact that fluorescent light bulbs and tubes contain a small amount of mercury, they are much more environmentally friendly than incandescent bulbs. The mercury they contain is much less than the mercury that would be emitted at a coal power plant to

create the electricity to light a regular bulb. Fluorescent bulbs and tubes only use 25% the electricity of a regular bulb and emit the same amount of light.

So, the next time you are in the market to furnish a new or retrofit an existing dorm on campus keep in mind that a Green dorm is not only beneficial to the students and surrounding communities but can also serve a greater purpose- They can help sell the university to prospective students.



Arc Com-Wonderland Collection



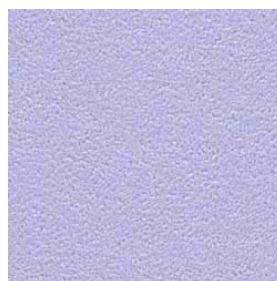
Luna Textiles-280 Collection



Hightower– Recycling Bins



Eco-Surface-Eco Earth



Lonseal– Lonfloor



Designtex-180 Collection