



NEW YORK UNIVERSITY

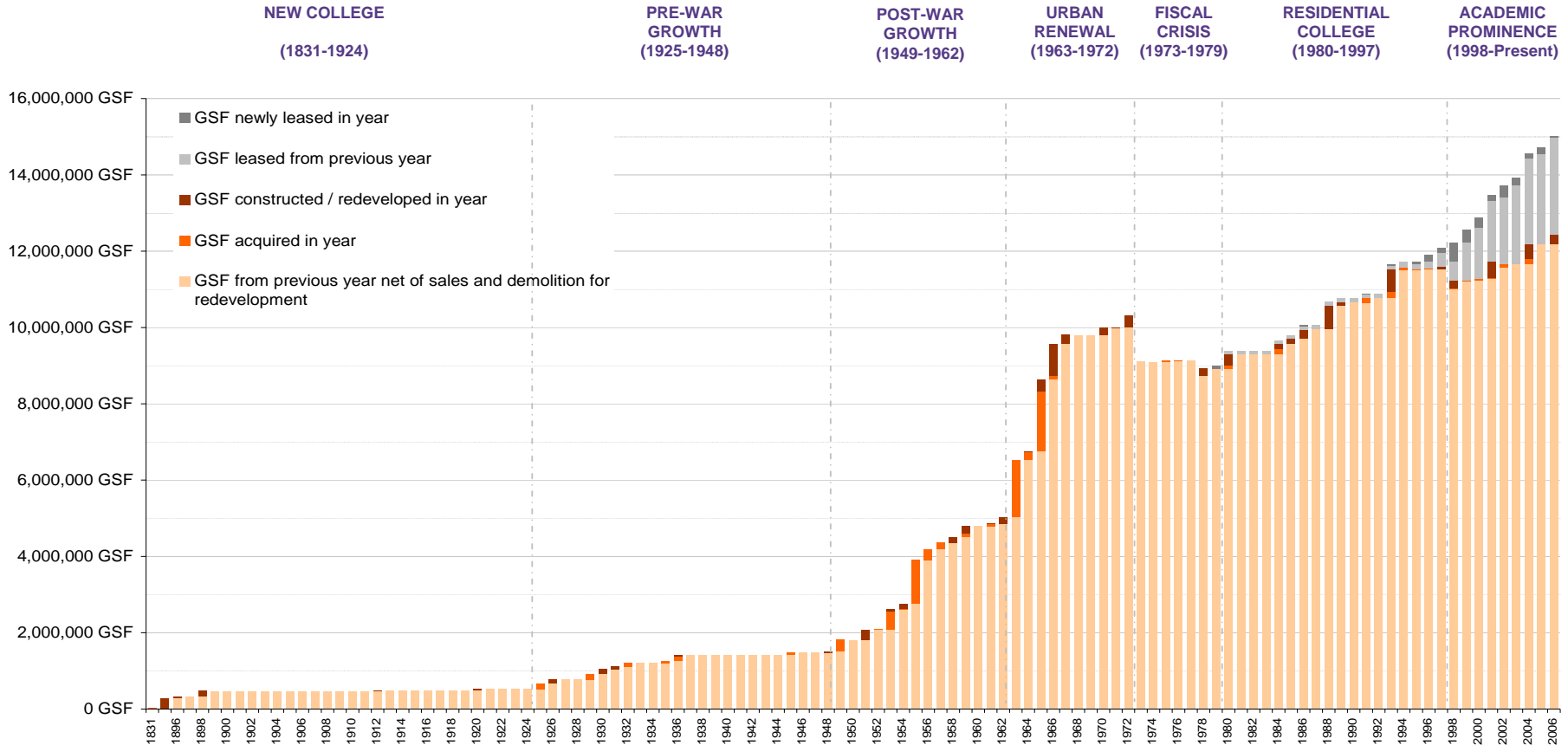
Strategic Planning Initiative

Historical Growth and Planning Considerations

March 29, 2007

HISTORICAL GROWTH: 1831 - 2006

New York City Cumulative Gross SF Leased and Owned (by year)

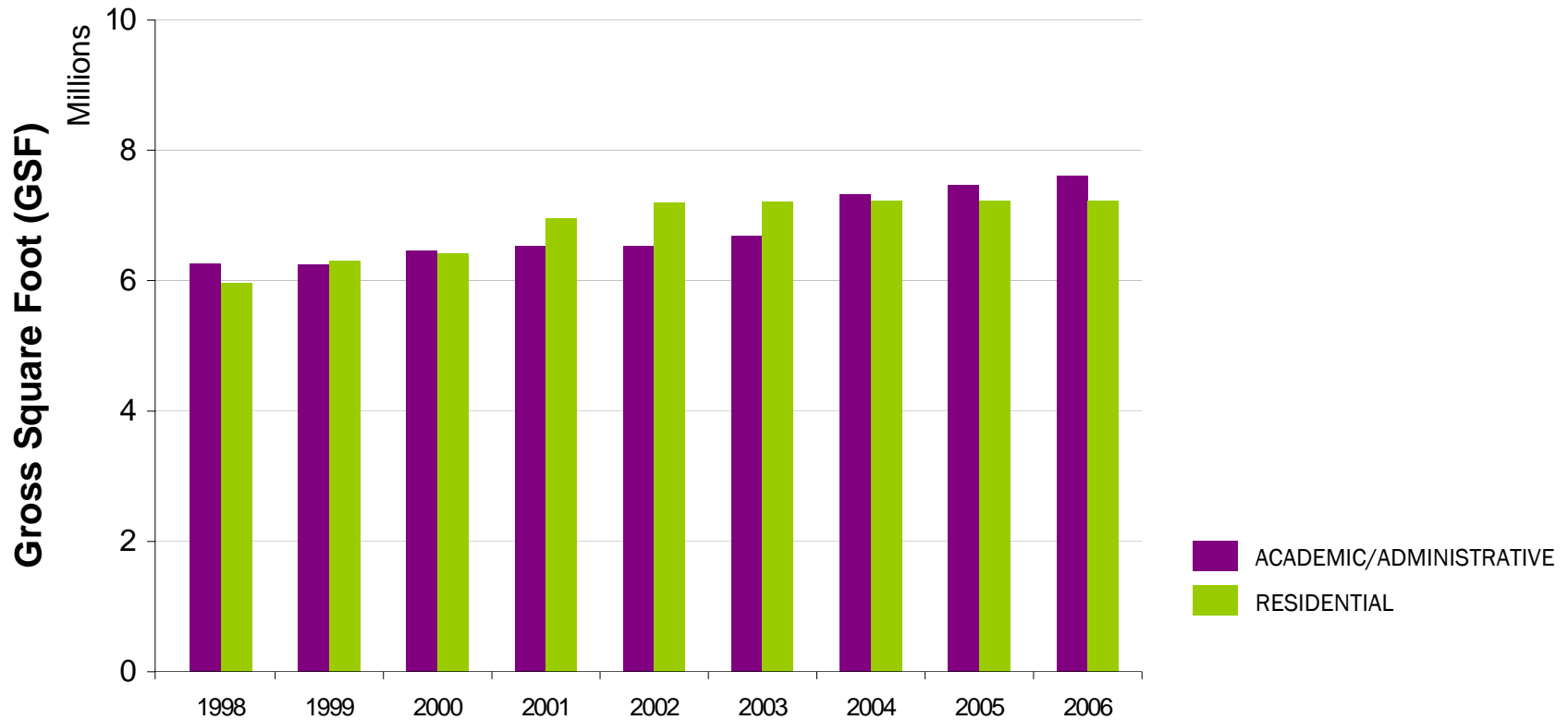


Source: NYU Owned and Leased Properties Database



HISTORICAL GROWTH: 1998 - 2006

New York City Gross SF Academic/Administrative and Residential

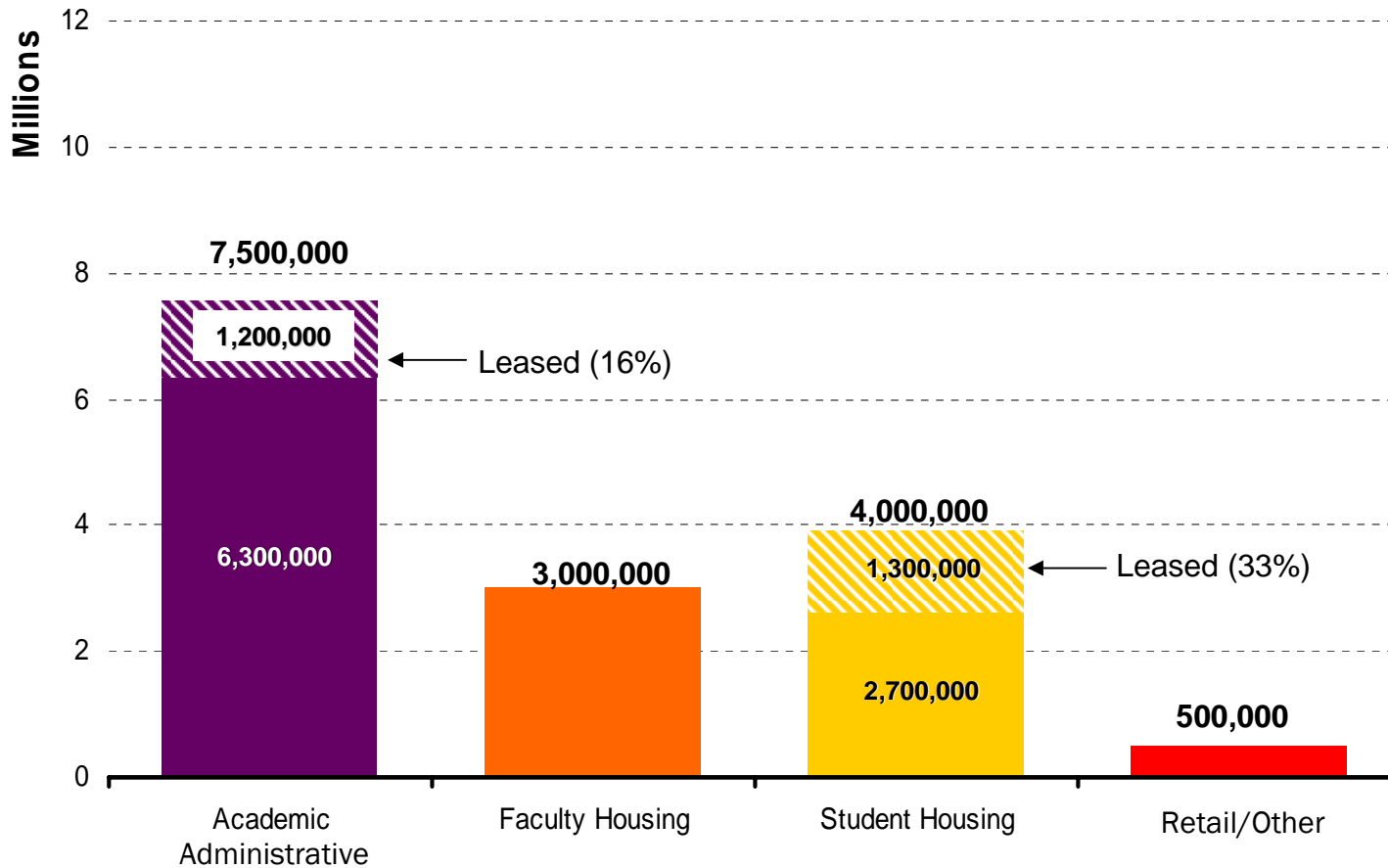


Source: NYU Owned and Leased Properties Database

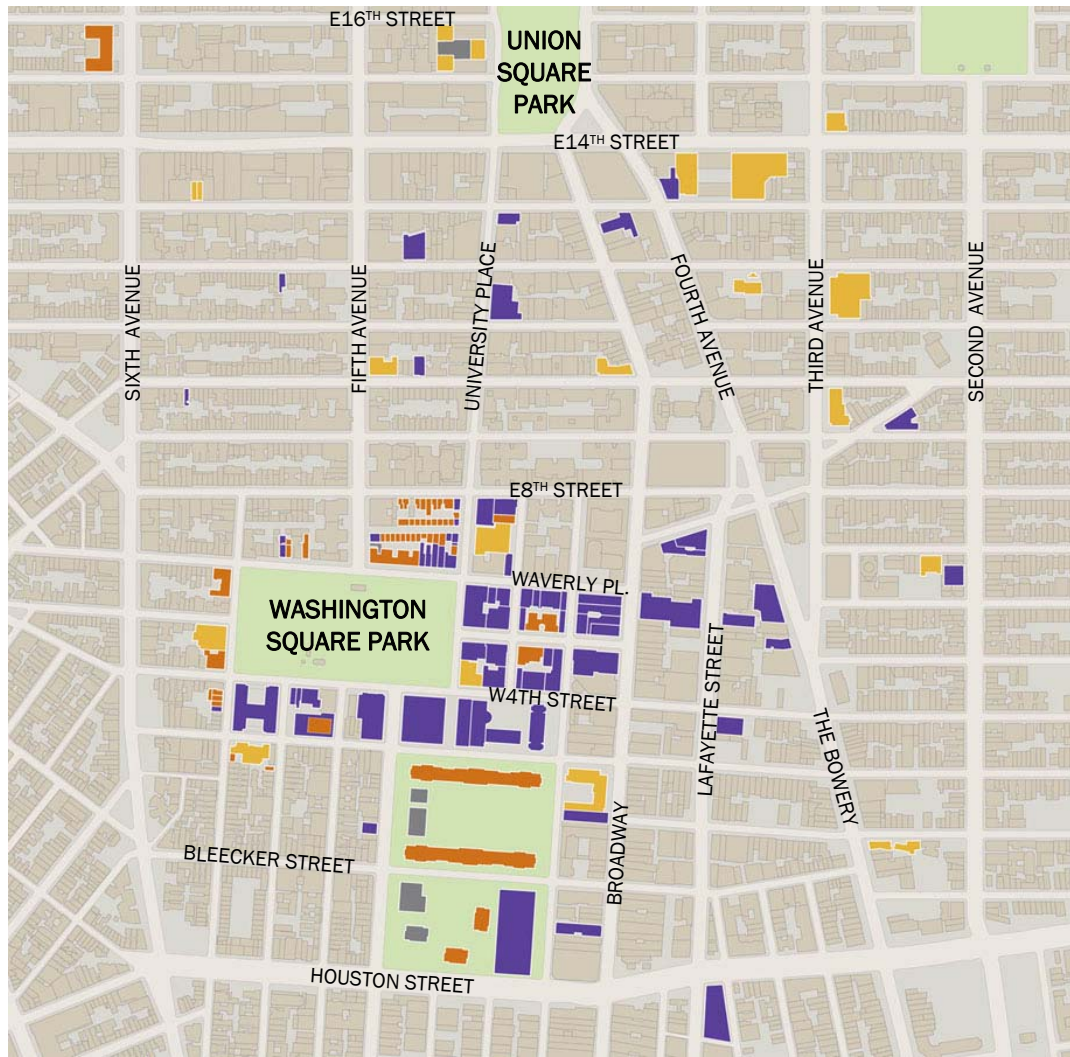


NYU 2006 SPACE

New York City Gross SF by Type



NYU 2006 SPACE

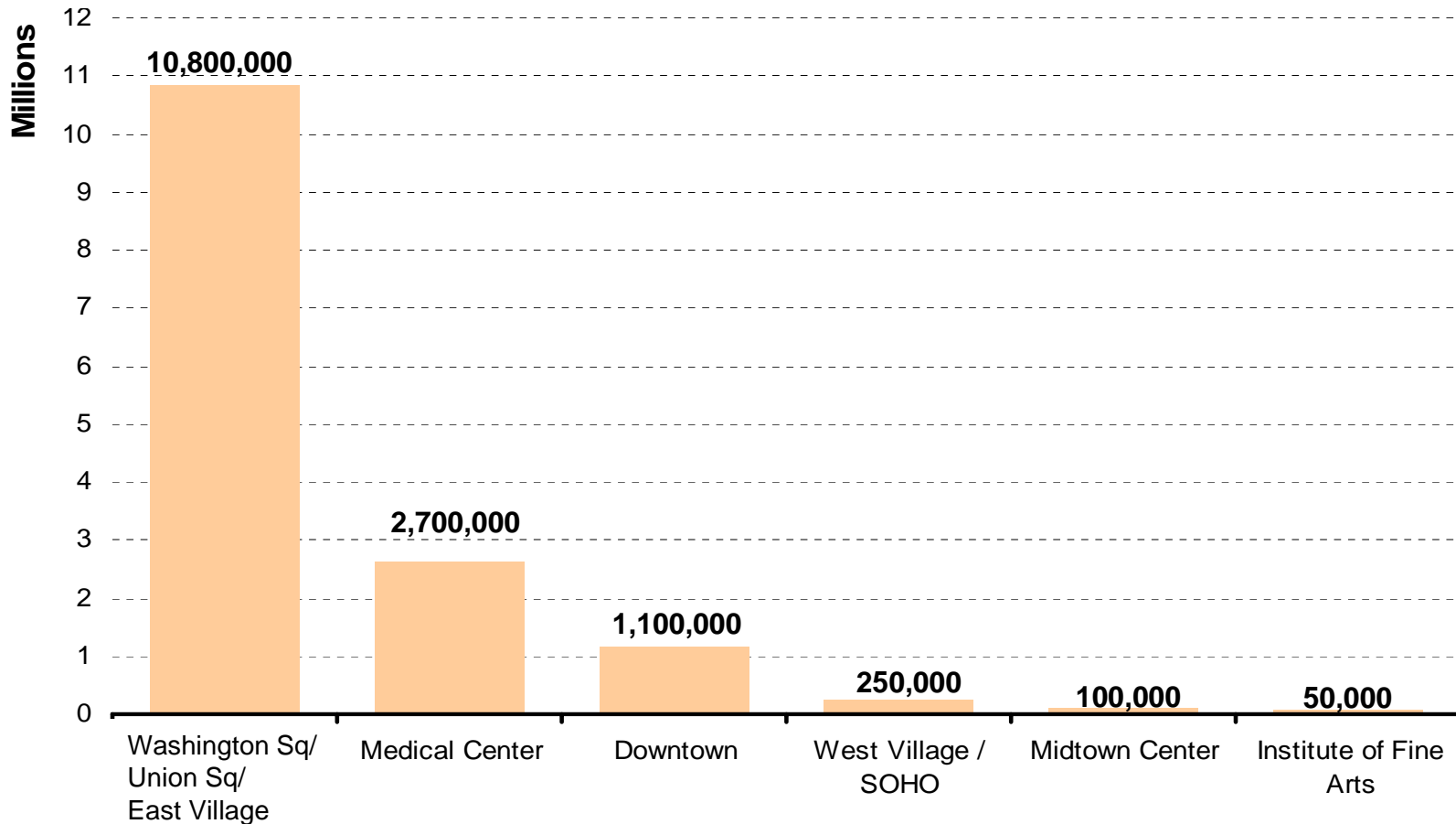


Washington Square/Union Square/East Village Area

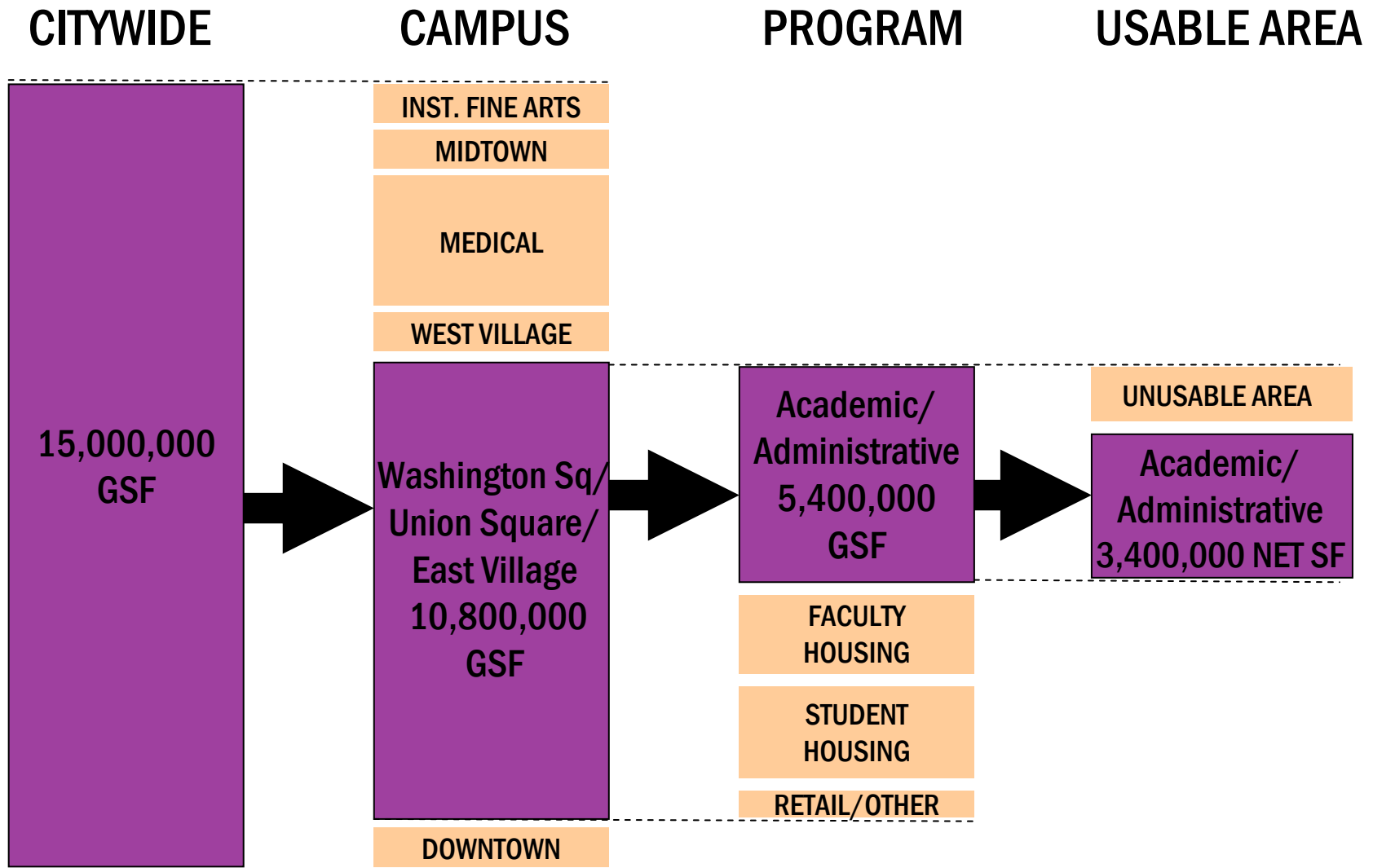


NYU 2006 SPACE

New York City
Total Gross SF
by Location



NYU SPACE OVERVIEW

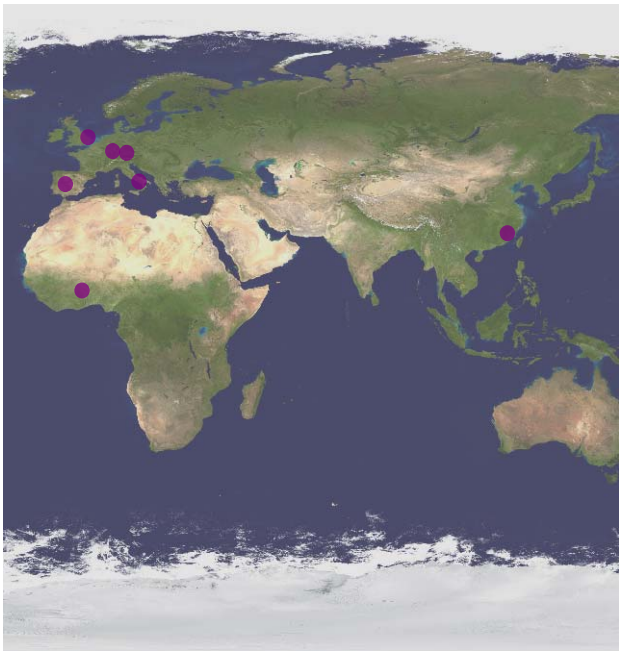


TRENDS IN HIGHER EDUCATION

- Science research
- Interdisciplinary education
- Clinical and technical training
- Institutes, research centers, partnerships
- Student life
- Communal space
- Technology
- Libraries and archives



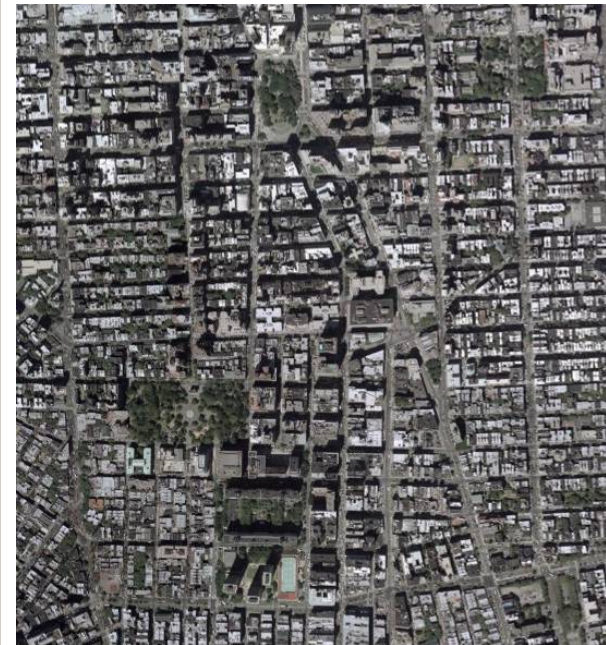
APPROACHES TO GROWTH



Global



New York City



**Washington Square/
Union Square**



NYU 200 PLANNING PRINCIPLES

- Maintain Campus Core for Academic and Student-Serving Users
- Maximize the Benefit of Existing Assets
- Respect the Character of Surrounding Communities
- Engage the Community
- Create Active Mixed-Use Environments
- Promote Environmentally Sustainable Design
- Preserve and Protect Historical Resources
- Showcase Leading-Edge Urban and Architectural Design



NEXT STEPS

