

How to Import Data Files Into SAS

By

Marc Grayson

MDG254@nyu.edu

Statistics, Social Science, and Mapping Group

Academic Computing Services

Information Technology Services

New York University

(212) 998-3398

May 2002

Overview

There are a few ways to import data into a SAS data set. Imported data files can include:

DBMS tables

PC files

Spreadsheets

Delimited external files

The two basic ways to import into a SAS data are explained in the steps below. The first way is through SAS Import Wizard (explained in section **B**) and the other is by converting your document in DBMS/Copy for Windows V7.0.1 (explained in section **C**).

A. Invocation of SAS on a Windows Platform

- (a) Starting SAS is done by clicking on the **Start** menu and highlighting the **Programs** Tab. Locate and highlight **The SAS System** and double-click on **The SAS System for Windows V8**. SAS will load and the following display should appear on the monitor:

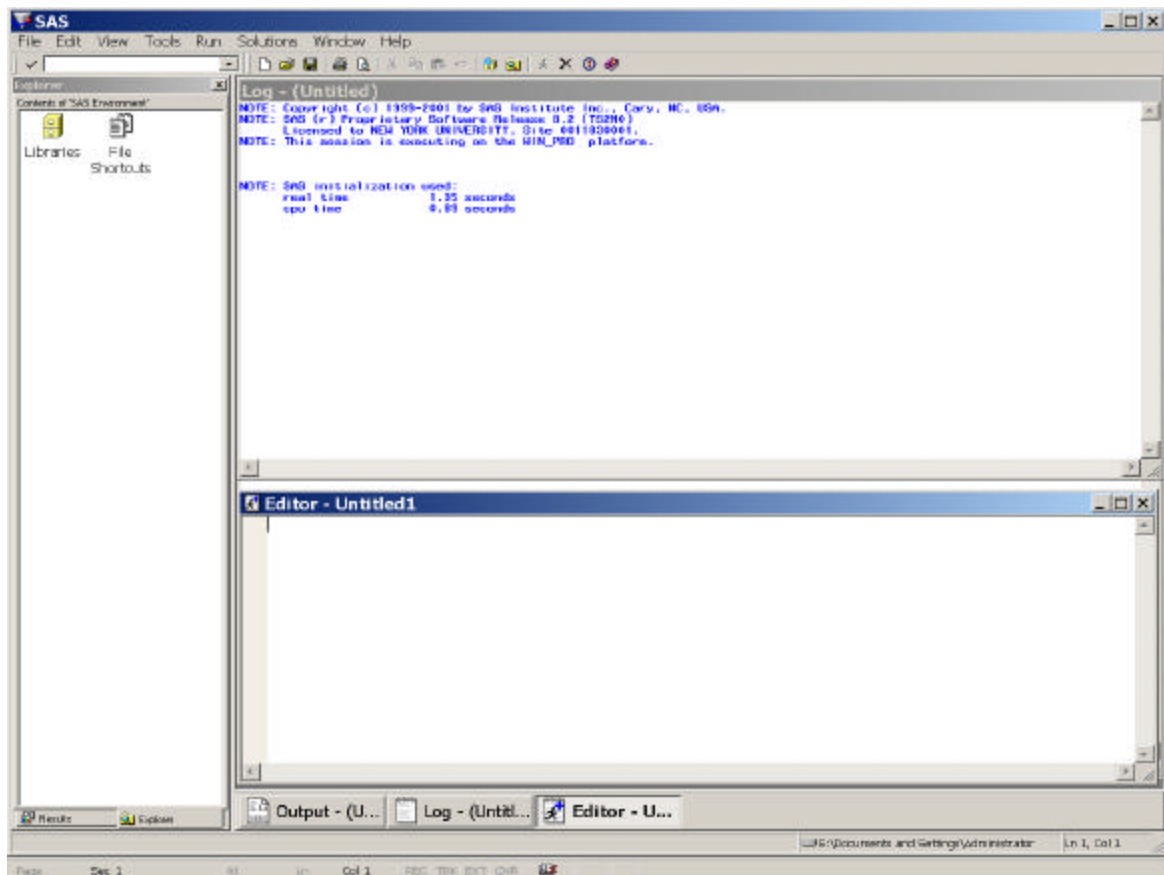


Fig. 1 SAS Windows Layout

(b) There should be three windows (Log, Editor and Results/Explore). There should also be a tab bar that allows you to jump between the Log, the Editor and Output (window which is not seen until you click on Output tab).

B. Import Through SAS Import Wizard

(a) Open the wizard by clicking on the **File** menu and selecting **Import Data**. The **Import Wizard** should appear as shown in Figure 2.

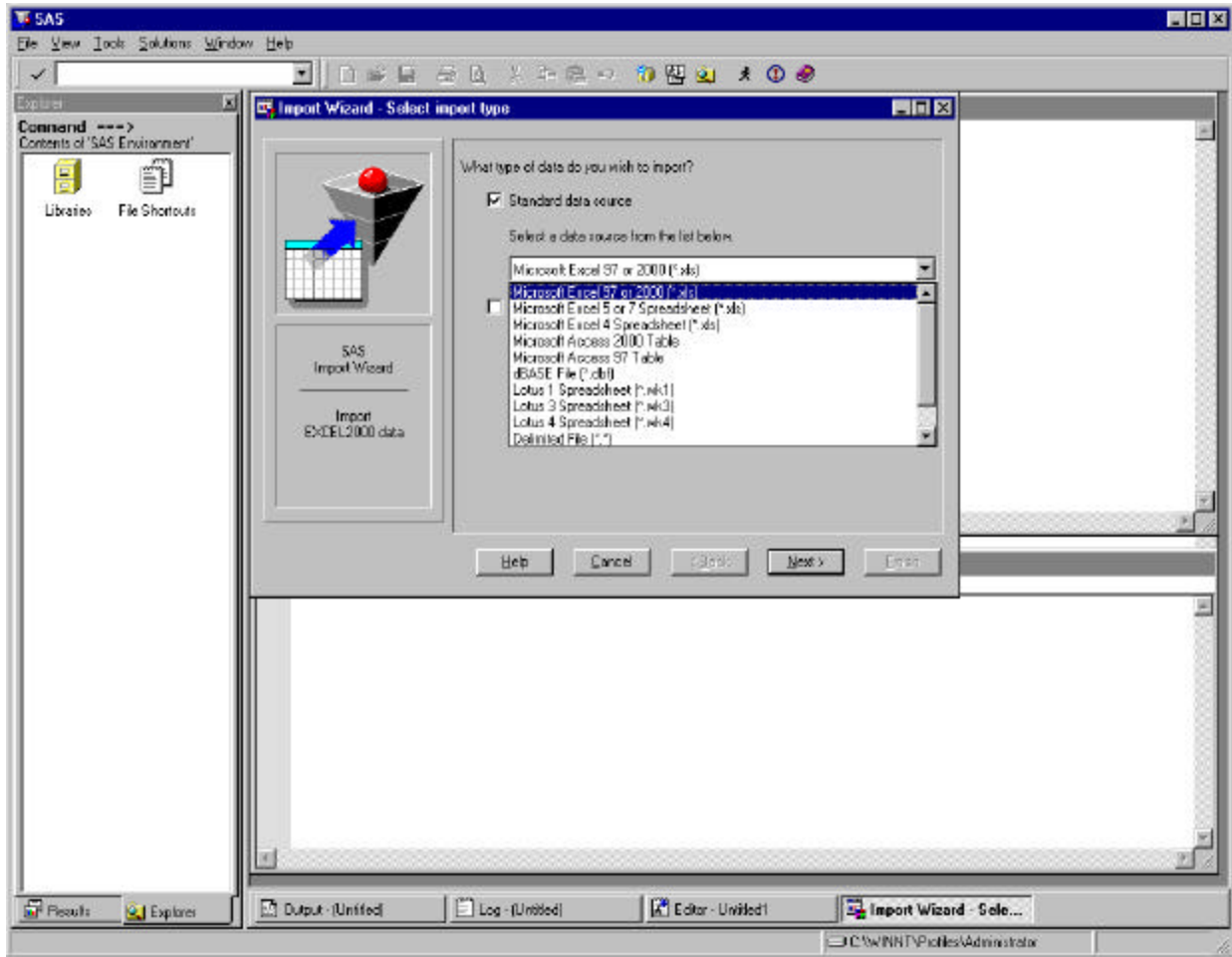


Fig. 2 SAS Import Wizard

(b) In following the steps of the **Import Wizard** you will:

1. Select the type of data you want to import.
2. **Browse** for the file. **Open** and then click **Next**.
3. Choose the **Library** and **Member** (which is the file and you have to name it).
4. The **Import Wizard** will then ask you if you would like to create a file containing the PROC IMPORT command. Use this only if you are going to repeatedly want to import the same data. This will then allow you to just type **PROC IMPORT** as a command in the **Program Editor** to import the same data with out having to go through the Import Wizard again.
5. Click on Finish

***Note:** Note the **Import Wizard** does not import SPSS files (ie. *.sav) directly. Refer to section **C. Converting in DBMS/Copy for Windows V7.0.1** to convert SPSS files.

(c) If it was successful in the **Log** window there should be a similar note as below:

NOTE: TheLibrary.YourFileName was successfully created.

-Now you are able to access the data by just typing: **Proc Print;**
Run;

-The data will then appear in the **Output** window.

C. Converting in DBMS/Copy for Windows V7.0.1

DBMS/Copy for Windows V7.0.1 is a program that can read and then write any supported system to any other supported database system. Basically converting any file between any of the following systems:

Spreadsheets	Databases	Statistics
Lotus 1-2-3 1 (wks) Lotus 1-2-3 2 (wk1) Lotus 1-2-3 3 (wk3) Lotus 1-2-3 4 (wk4) Lotus 1-2-3 5 (wk5) Lotus 1-2-3 9/97/2000 (123) DIF Excel 2 , 3, 4 Excel 5 Excel 7 Excel 97 MultiPlan SYLK Quattro Quattro PRO Quattro PRO Ver 5 to 8 Symphony (.wrk) Symphony (.wr1)	Access Alpha Four Clarion Clipper DataEase 2.5 to 4.53 dBase II,III,IV& V FoxBase & FoxPro Oracle Paradox 2 to 9.0 PC-File PFS:File PRODAS 3.2 to 4.0 Rbase to 3.5 Reflex 1 & 2 Smartware I Visual FoxPro	ABStat Across Bass BMDP BMDP/386 BMDP/Dynamic BMDP New System CSS & CSS/3 EGRET EpiInfo 3 - 6 Gauss Glim JMP LIMDEP MicroStat-II Minitab 6,7,8 Minitab Extended 8,9,10 NCSS SAS/PC SAS for Windows 6.08 to 6.12 SAS for Windows V7 & V8 SAS for OS/2 6.08 to 6.12 SAS for Unix 6.07 to V8 SAS for VMS 6.07 to 6.12 SCA SigmaStat Solo S-Plus SPSS/PC SPSS for Windows SPSS for Windows Compressed SPSS for OS/2 Stata to 7.0 StatGraphics StatGraphics Windows Statistica to V5 StatPac StatPlan III StatXact SYSTAT 4, 5, 6

		SYSTAT for the Macintosh Ystat
ASCII	Portable Files	Time Series
Free Format Fixed Format Multiple Line Fixed	HTML Internet Files SAS Transport (Xport) SAS Transport (V6) SPSS Portable	4CaST/2 Autobox Autocast Forecast Pro PC-Give Probe Rats Soritec X11
Graphics	Vertical Market	
Axum SigmaPlot 3 and 4 SigmaPlot 5 Sygraph	EntryPoint 90 (Data Entry) ACT! Ver 1 and 2 Business Cycle Indicators Quantime	

DBMS/Copy can act in the same way as **SAS Import Wizard** does, except converting files within a greater variety of programs. **DBMS/Copy** can also be useful when **SAS Import Wizard** fails to import text variables.

(a) Starting **DBMS/Copy** is done by clicking on the **Start** menu and highlighting the **Programs** tab. Locate and highlight **Dbmscopy** and double-click on **DBMSCOPY V7 (with DBMSAnalyst)**. **DBMS/Copy** will load and the following display should appear on the monitor:

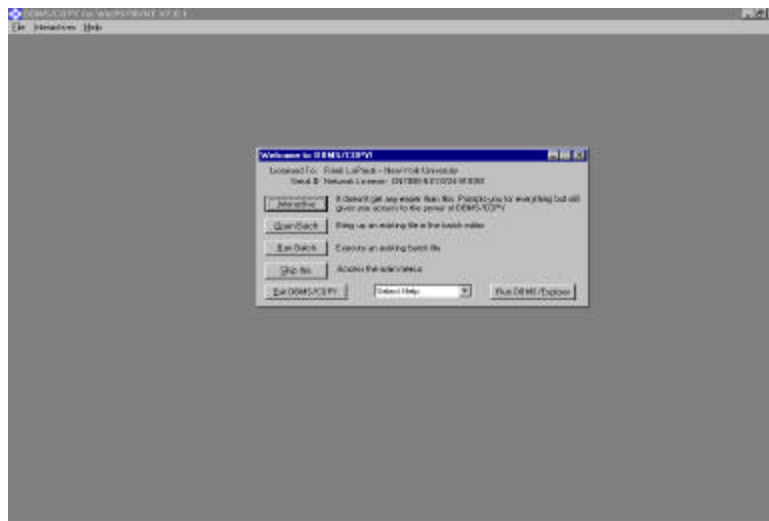


Fig. 3 DBMS/Copy Welcome

- (b) Click on the **Interactive** tab. The **Input Database** window will open prompting you to choose the file which you want to convert. If you cannot find the file make sure that you have the correct **File of Type** and that you are in the correct folder. Click **Open** after file is selected.

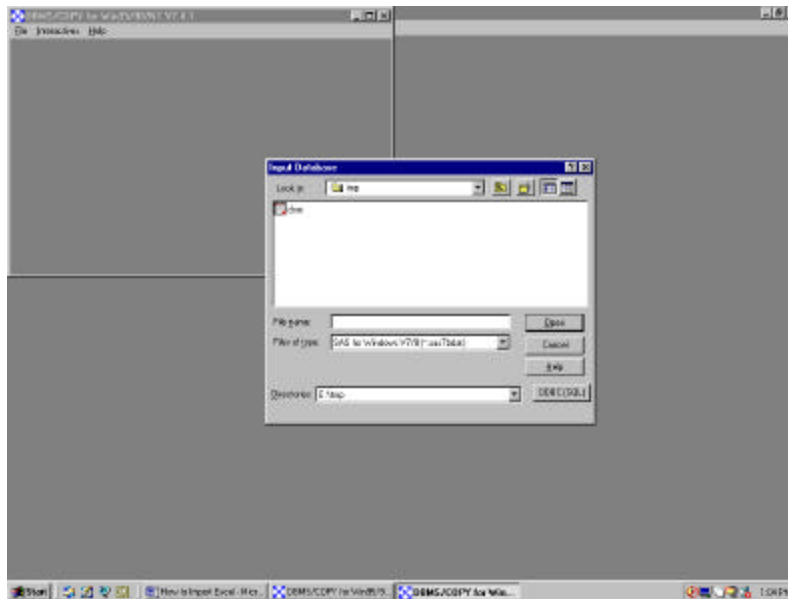
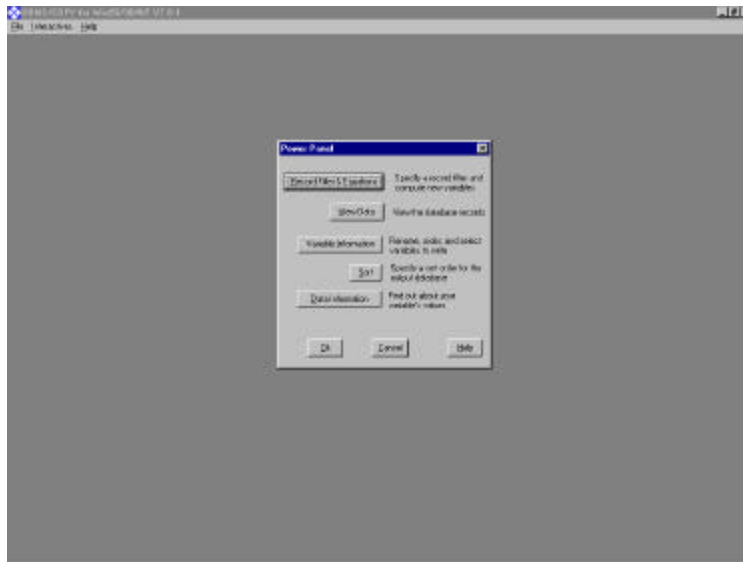


Fig. 4 DBMS/Copy Input Database

- (c) Depending on the file you want to convert **DBMS/Copy** will allow you to edit the variables. For **Excel** in the **SpreadSheet Grabber** window will open up before you convert the file. Click **OK** if all the variables are correct.
- (d) The **Power Panel** will pop up and allow you to filter, view, change and sort the data. To continue the conversion click on **OK** at the bottom of the **Power Panel**.



- (e) The **Select Output Database** will open to allow to select both the folder to where and type of file that you want to convert the existing. Clicking **Save** will bring up the **DBMS/COPY, Transfer Verification**. To complete the conversion click on **Do-It!**.

***Note:** In converting a file **DBMS/COPY** creates a copy of the original and converts the copy so that the original unconverted file remains saved.

(f) The program will process and then allow you to select a **Done** button, which will return you the welcome menu as seen in Fig. 3.