

## Facilities at NYU

### Academic Program

#### MA - Human Skeletal Biology Track

##### Overview:

- Two-Year Program
- 36 points & MA Thesis

##### Required Courses:

- Departmental Seminar
- Human Osteology and Odontology
- Interpreting the Human Skeleton
- Human Genetics and Variation
- Laboratory or Field Internship
- Statistics

##### Elective Courses (A Sampling):

- Dental Anthropology
- Paleopathology
- Faunal Analysis
- Archaeological Method & Technique
- Evolutionary Morphology
- Fossil Evidence Human Evolution
- Gross Anatomy Methods
- Geoarchaeology and GIS
- Biomechanics
- Forensic Psychology
- Forensic Anthropology
- Isotopic Methods in Anthropology



### **Skeletal Morphology Laboratories:**

The Department of Anthropology houses several skeletal biology laboratories:

- *Human Osteology Laboratory*
- *Faunal Analysis Laboratory*
- *Dental Anthropology Laboratory*
- *Comparative Morphology Laboratory*
- *Paleoanthropology Laboratory*

These house extensive teaching and research collections including whole and fragmentary



skeletons and instructional sets for assessing skeletal age and sex, dental anatomy and variation; mammalian,

nonmammalian and domesticated fauna; nonhuman primate (NHP) skeletons and cadavers; excellent cast collections of Paleogene to Pleistocene NHP fossils and fossil hominins; computer workstations, laser scanners, digitizers and software for collecting and analyzing 2D and 3D datapoints.

### **Molecular Anthropology Laboratories:**

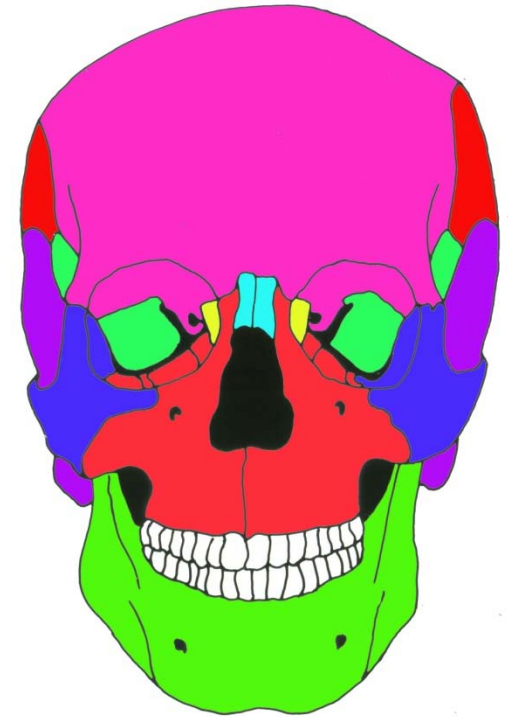
The department also houses one of the best equipped molecular primatology laboratories in the country with bench space for up to 10 simultaneous researchers. All equipment required for DNA extraction, typing, sequencing, and quantification as well as an ancient DNA extraction facility.



New York University  
Department of Anthropology

### MA - Physical Anthropology

*Human Skeletal Biology Track:*  
Osteology, Genetics, Bioarchaeology,  
Forensic Anthropology



### **Program Information:**

<http://www.nyu.edu/gsas/dept/anthro/index.htm>

*MA in Skeletal Biology*  
Dept. Anthropology, New York University  
25 Waverly Place, New York, NY 10003

**MA Program in Physical Anthropology**  
***Human Skeletal Biology Track***



Human skeletal biology forms the foundation of applied and academic sub-disciplines of Physical Anthropology including Bioarchaeology, Forensic Anthropology, and Paleoanthropology. This MA track provides focused training in the theories, research methods, and techniques of skeletal biology including those in human osteology and variation, genetics, and archaeological aspects of mortuary analysis.



Through coursework, practical internships, and primary research, the program prepares graduates to apply these research principles and techniques to a variety of contexts, especially in Forensic Anthropology (i.e., Medical Examiner's Office, Criminal Justice) and Bioarchaeology. The program is also useful training for students who are preparing for admission to doctoral programs in skeletal biology, genetics, or human evolution.



The program focuses on the integral connection between primary research and the development and application of methodological techniques. Coursework emphasizes the importance of variation and context when interpreting the medico-legal and archaeological significance of human remains. Internships provide mastery of critical skills.



The faculty includes 10 core members of the NYU department of Anthropology (7 biological anthropologists and 3 archaeologists). Affiliated human skeletal biologists from around New York city are available as research resources and/or as intern mentors.

**New York University**  
***Human Skeletal Biology Track***  
***MA Program in Physical Anthropology***

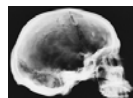


**Program Information:**

<http://www.nyu.edu/gsas/dept/anthro/programs.htm>  
**Director, MA in Skeletal Biology**  
**Dept. Anthropology, New York University**  
**25 Waverly Place, New York, NY 10003**

**Application Forms:**

<http://www.nyu.edu/gsas/Admissions/AdmApp.htm>



**New Deadline**  
**MARCH 1**



**Program Requirements:**

Formal requirements include 36 points of course work (see overleaf) including an internship and a written master's thesis based on original osteological or genetic research. Program highlights include: yearlong forensic colloquia and opportunities for lab internships at NYU and other institutions



**Core Faculty – NYU Anthropology**

**Susan Antón** - Director, *Human osteology & evolution*

**Shara Bailey** - *Odontology and Dental Evolution*

**Pamela Crabtree** – *Zooarchaeology*

**Todd Disotell** - *Molecular Anthropology*

**Terry Harrison** - *Primate Anatomy & evolution*

**James Higham** - *Primate Behavior*

**Cliff Jolly** - *Primate Evolution*

**Scott Williams** – *Functional morphology & evolution*

**Randall White** - *Archaeology & mortuary context*

**Rita Wright** - *Archaeology & Urbanism*



**Affiliated Laboratories & Institutions:**

**NYU School of Dentistry - Anatomy**

**Office of the Chief Medical Examiner, NY**

**NJ Office of the Regional Medical Examiner,**

**New Jersey State Police, Hamilton, NJ**

**National Museum of Health and Medicine**

**City and State University New York**

**American Museum of Natural History**

**NYU – Human Skeletal Biology**  
**Resource Faculty - Other Institutions:**

**Office of the Chief Medical Examiner, NY**  
**Anthropology**

Bradley Adams, DABFA - *Forensic Anthropology*  
Kristen Hartnett, DABFA - *Forensic Anthropology*  
Benjamin Figura – *F.A. & Missing Persons*  
Christopher Rainwater – *F.A. & Photography*

**Office of the Chief Medical Examiner, NY**  
**Genetics**

Sheila Estacio Dennis – *Forensic Genetics*  
Tony Tosi – *Forensic Genetics*

**Armed Forces Medical Examiner System, DE**

Christian Crowder, DABFA – *Forensic*  
*Anthropology and Bone Histology*

**Regional Medical Examiner’s Office,**  
**Newark, NJ**

Gina Hart – *Forensic Anthropology and Crime*  
*Scene Investigation*

**New Jersey State Police, Hamilton, NJ**

Donna Fontana – *Forensic Anthropology and*  
*Missing Persons*

**National Museum of Health & Medicine,**  
**Washington, DC**

Franklin Damann – *Forensic Anthropology*  
Brian Spatola – *Forensic Anthropology and*  
*Collections Management*

**American Museum of Natural History, NY**

Will Harcourt-Smith - *3dGM, Human evolution*  
Gisselle Garcia Park – *Collections Management*

**NYU – Human Skeletal Biology**  
**Resource Faculty - Other Institutions:**

**NYU - School of Dentistry**

Eric Baker - *Anatomy & Evolution*  
Tim Bromage – *Skeletal Biology*

**City University New York**  
**Hunter Anthropology**

Herman Pontzer– *Biomechanics, human evolution*

**City University New York**  
**Lehman Anthropology**

Will Harcourt-Smith – *3dGM, Paleoanthropology*  
Vincent Stefan, DABFA - *Forensic Anthropology*

**City University New York**  
**Queens Anthropology**

Kate Pechenkina – *Bioarchaeology*  
Felicia Madimenos – *Human Biology*  
Sara Stinson - *Human Biology*

**Adelphi University**

Anagnostis P. Agelarakis - *Bioarchaeology*

**State University NY, Downstate**

Sam Márquez– *Gross Anatomy*

**Seton Hall University**

Rhonda Quinn – *Geoarchaeology, stable isotopes,*  
*paleoecology, gross anatomy*

**Wagner College**

Celeste Gagnon - *Bioarchaeology*



**Completed Masters Theses**

<http://anthropology.as.nyu.edu/object/antho.completedmatheses>