

Appendix II

Table AIII. The total number of contributions and provision rate by network

Network	Total contributions				Under provision	Provision
	0	1	2	3		
Empty	0.058	0.391	0.453	0.098	0.449	0.551
One-link	0.107	0.267	0.440	0.187	0.373	0.627
Line	0.073	0.163	0.653	0.110	0.237	0.763
Star-out	0.204	0.113	0.618	0.065	0.316	0.684
Star-in	0.076	0.240	0.560	0.124	0.316	0.684
Pair	0.120	0.276	0.452	0.152	0.396	0.604

Wilcoxon (Mann-Whitney) rank-sum test - under (white) / over (gray)

	Empty	One-link	Line	Star-out	Star-in	Pair
Empty	--	0.007	0.651	0.186	0.365	0.076
One-link	0.104	--	0.013	0.000	0.059	0.314
Line	0.000	0.001	--	0.061	0.611	0.144
Star-out	0.002	0.182	0.033	--	0.021	0.001
Star-in	0.003	0.189	0.038	0.993	--	0.365
Pair	0.244	0.613	0.000	0.057	0.062	--
	--	0.104	0.000	0.002	0.003	0.244

Table AII2. The evolution of contributions over time by uninformed and informed types

A. Uninformed

Network	Position	Period			Contribution rate
		1	2	3	
One-link	<i>B</i>	0.556 (225)	0.300 (100)	0.300 (70)	0.782
Line	<i>C</i>	0.817 (300)	0.164 (55)	0.087 (46)	0.860
Star-out	<i>B, C</i>	0.320 (550)	0.190 (374)	0.076 (303)	0.491
Star-in	<i>A</i>	0.616 (250)	0.375 (96)	0.217 (60)	0.812

B. Informed

Network	Position	Period			Contribution rate
		1	2	3	
One-link	<i>A</i>	0.098 (225)	0.300 (203)	0.444 (142)	0.649
Line	<i>A</i>	0.013 (300)	0.037 (296)	0.095 (285)	0.140
	<i>B</i>	0.137 (300)	0.571 (259)	0.459 (111)	0.800
Star-out	<i>A</i>	0.040 (275)	0.133 (264)	0.476 (229)	0.564
Star-in	<i>B, C</i>	0.176 (500)	0.182 (412)	0.199 (337)	0.460
Pair	<i>A, B</i>	0.314 (500)	0.344 (343)	0.338 (225)	0.702

C. Isolated

Network	Position	Period			Contribution rate
		1	2	3	
Empty	<i>A, B, C</i>	0.415 (675)	0.076 (395)	0.132 (365)	0.530
One-link	<i>C</i>	0.173 (225)	0.043 (186)	0.084 (178)	0.276
Pair	<i>C</i>	0.140 (250)	0.047 (215)	0.063 (205)	0.232

() - # of obs.

Table AII3. The frequencies of contributions at different states in the line network

		<i>A</i>		<i>B</i>		<i>C</i>
1	n_i	--		--		--
	Freq.	0.013 (300)		0.137 (300)		0.817 (300)
2	n_i	0	1	0	1	--
	Freq.	0.012 (255)	0.195 (41)	0.178 (45)	0.654 (214)	0.164 (55)
3	n_i	0	1	0	1	--
	Freq.	0.118 (110)	0.080 (175)	0.129 (31)	0.588 (80)	0.087 (46)

Table AII4. The frequencies of contributions at different states in the star-out network

		<i>A</i>			<i>B,C</i>
1	n_i	--			--
	Freq.	0.040 (275)			0.320 (550)
2	n_i	0	1	2	--
	Freq.	0.042 (118)	0.220 (123)	0.130 (23)	0.190 (374)
3	n_i	0	1	2	--
	Freq.	0.057 (70)	0.882 (119)	0.000 (40)	0.076 (303)

Table AII5. The frequencies of contributions at different states in the one-link network

		<i>A</i>		<i>B</i>	<i>C</i>
1	n_i	--		--	--
	Freq.	0.098 (225)		0.556 (225)	0.173 (225)
2	n_i	0	1	--	--
	Freq.	0.034 (89)	0.509 (114)	0.300 (100)	0.043 (186)
3	n_i	0	1	--	--
	Freq.	0.313 (64)	0.551 (78)	0.300 (70)	0.084 (178)

() - # of obs.

Figure AII2. The frequencies of contributions across time for selected positions

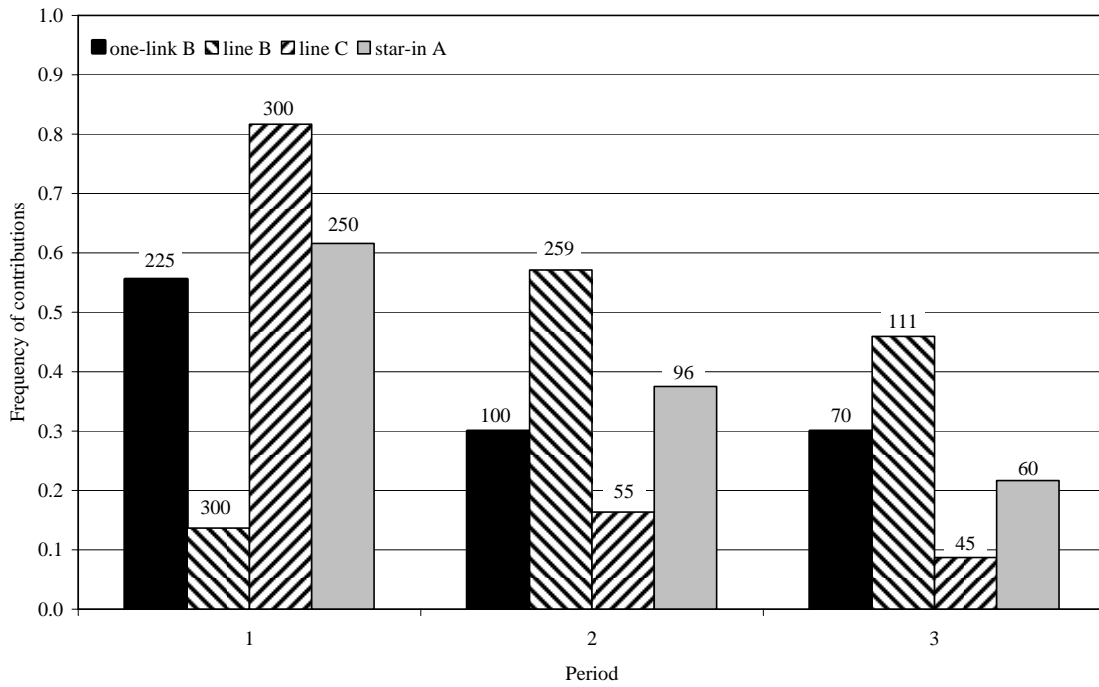


Figure AII3. The frequencies of contributions at payoff-relevant states for selected positions

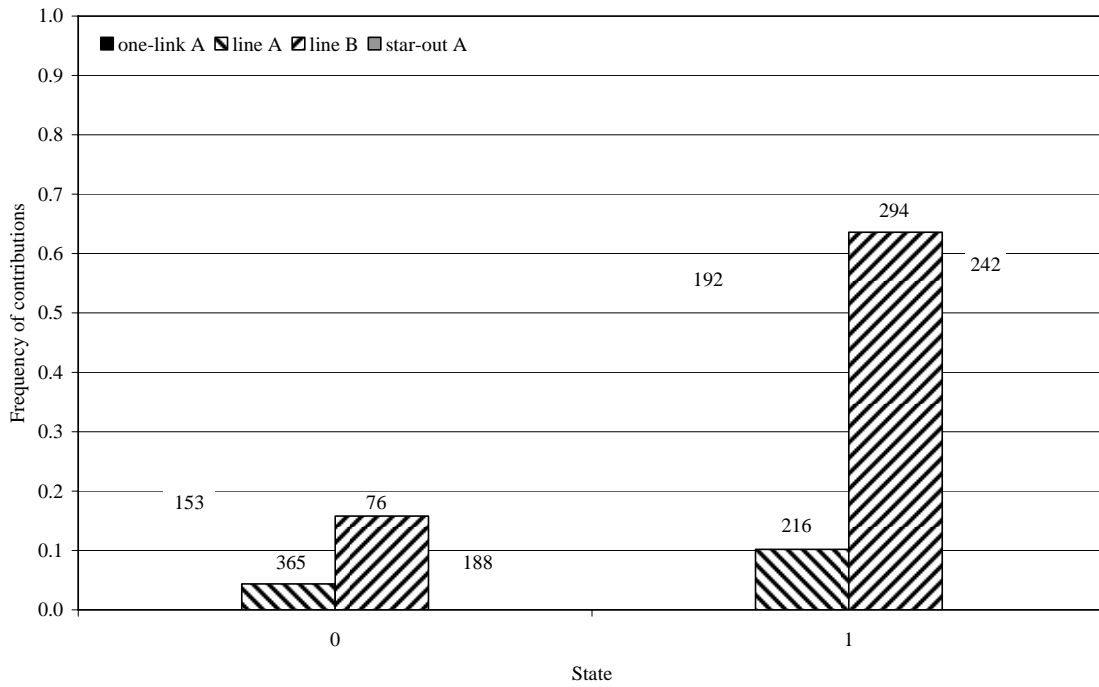


Figure AII4. The total contributions across time in the star-out network by subjects in positions *B* and *C*

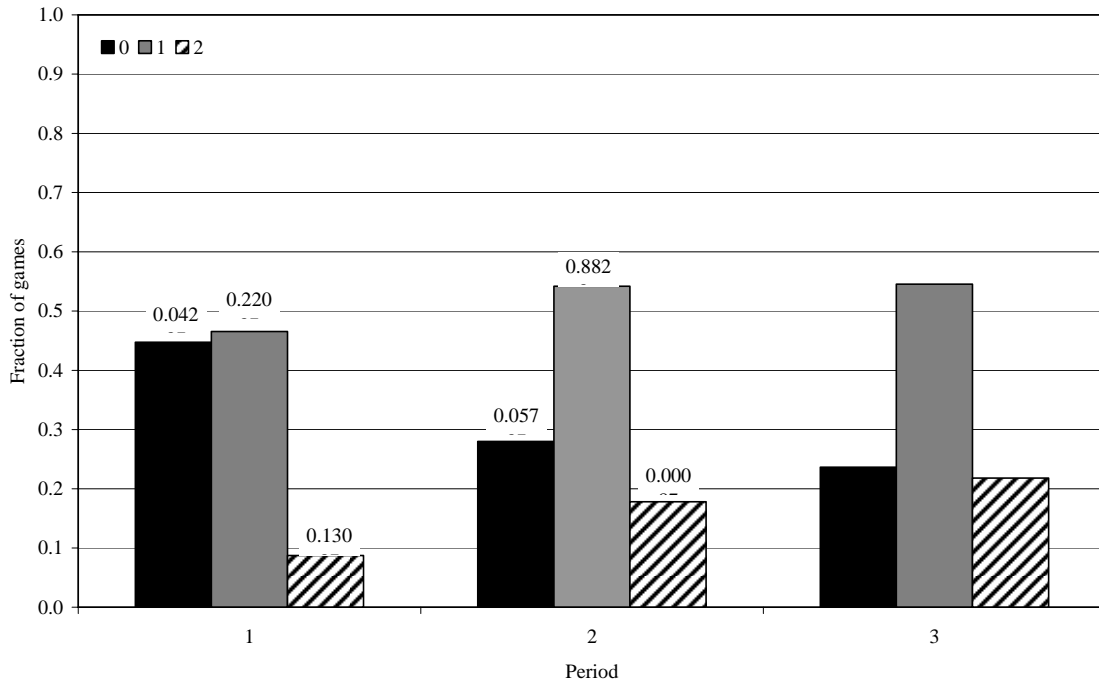


Figure AII5. Efficiency in the star-in network conditional on the timing of contribution of position-A subjects

