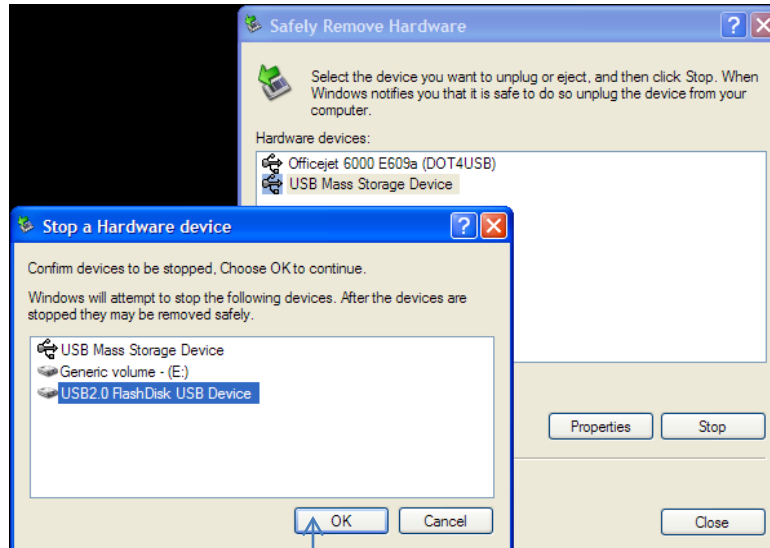
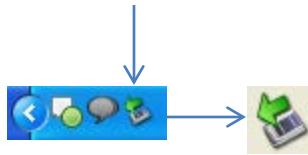


# FLASH DRIVE REMOVAL

**Q:** Do I really need to *Eject USB Drives* before removing them?

**A:** You should probably always eject a drive before removing it, even if the context menu doesn't have an eject option. Mac and Linux will always provide a way to eject a drive, but sometimes Windows doesn't have an obvious "Eject" button for certain drives. On Windows, click the "Safely Remove Hardware" icon in the system tray, choose your drive from the list, and then remove it once it notifies you of its safe removal.

Click on Icon



Click OK