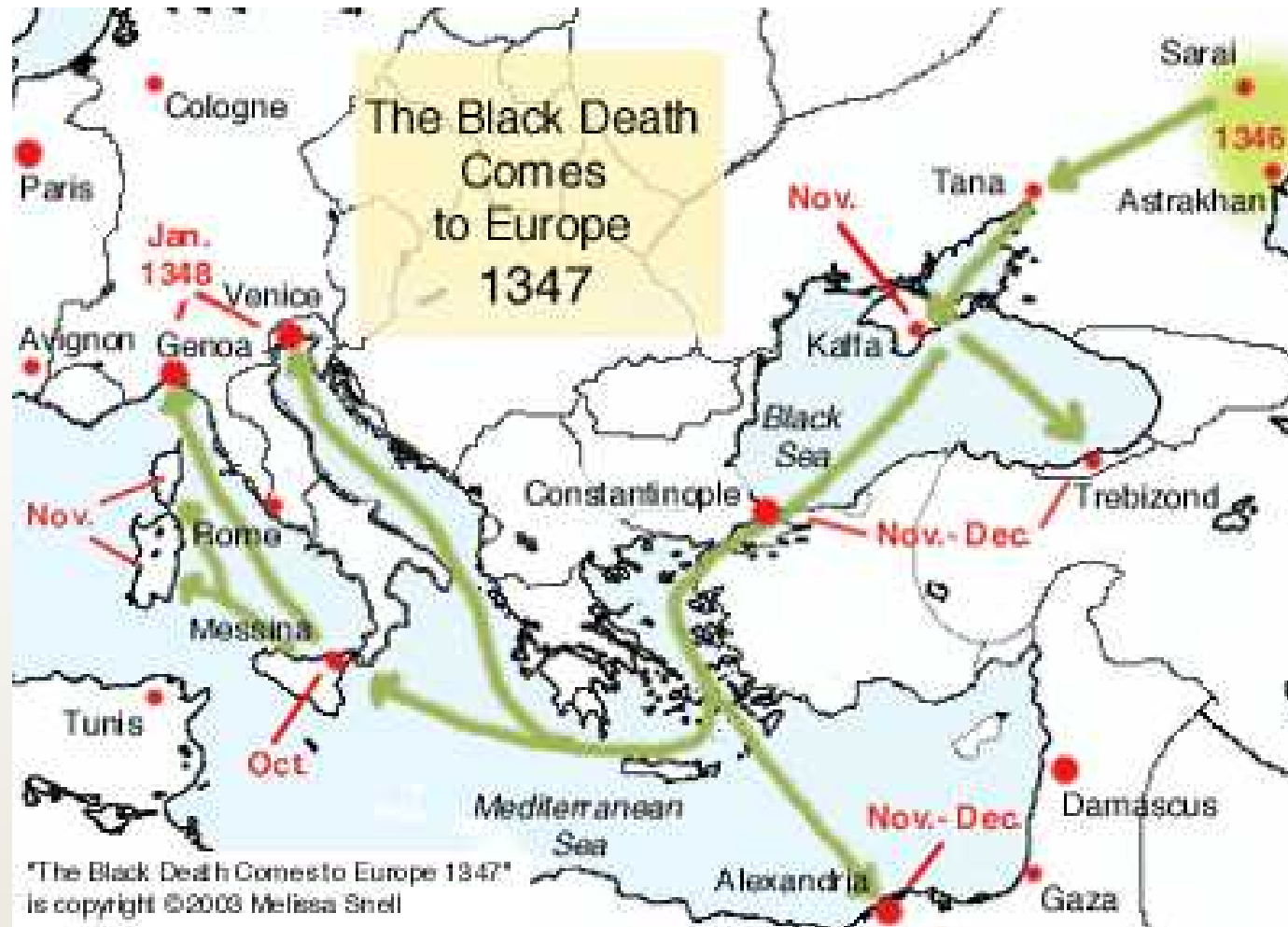


Roads to a Healthy Future (ROADS) Project: *African Transport Corridors and Waterways*

Dorothy Muroki
Project Director, ROADS
Africa House, New York University
December 1, 2011

Transport Routes and Infectious Disease: An Historical Perspective



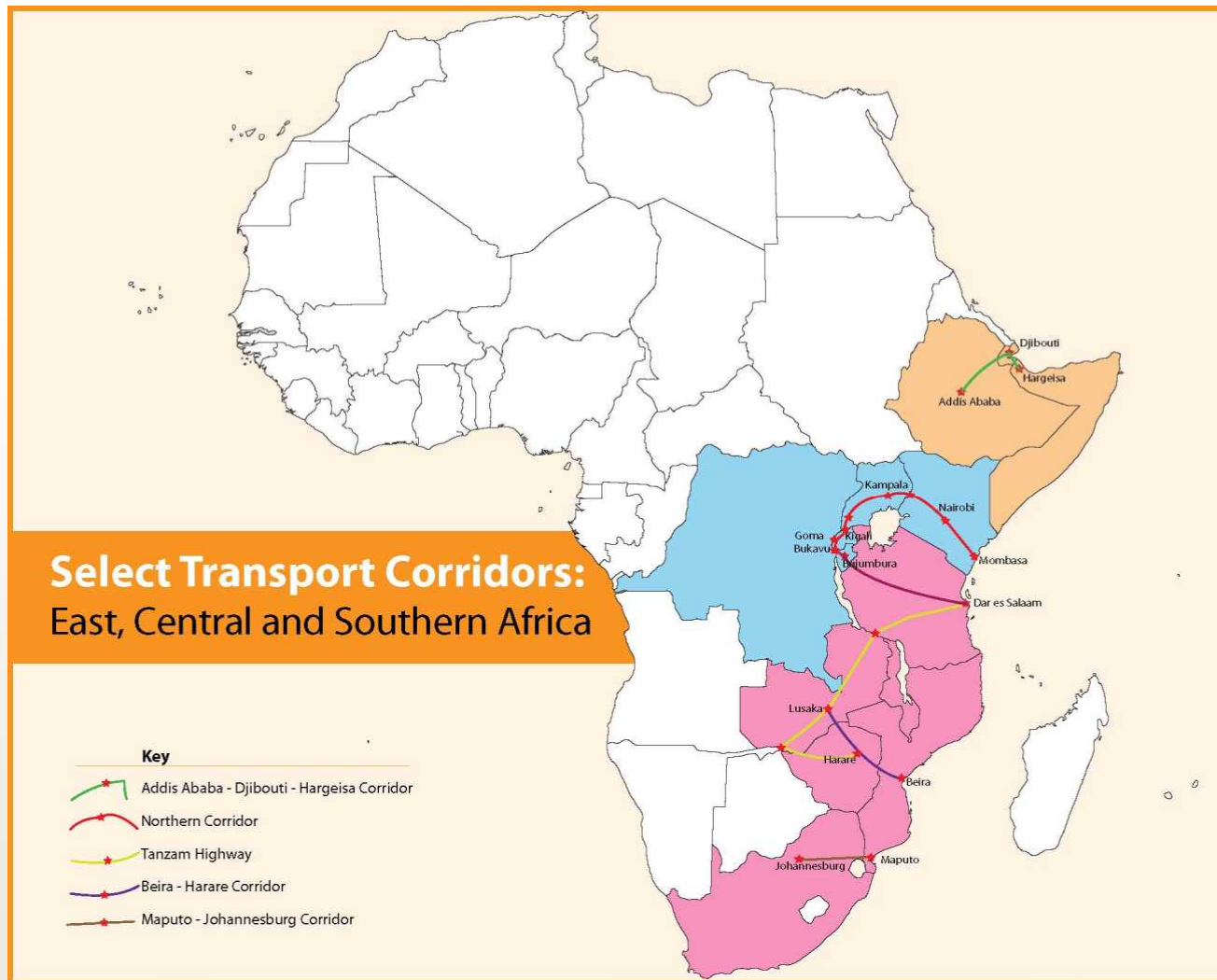
Transport Routes and Infectious Disease: A Contemporary Perspective



USAID
FROM THE AMERICAN PEOPLE



DP WORLD



African Transport Routes and Ports



USAID
FROM THE AMERICAN PEOPLE



- Un- and under-employed individuals drawn to bustling transport corridor and port towns in search of economic opportunity
- Disproportionate number of young women working in service sector jobs with low pay
- Prevalent multiple concurrent sexual partnerships, widespread substance abuse, low levels of condom use
- High levels of sexual interaction between port workers, including seafarers and transport workers, and vulnerable community members
- More than 6,000-9,000 truckers waiting at truck stops in and around Port of Djibouti and 5,000 vulnerable port workers

African Transport Routes and Ports (2)



USAID
FROM THE AMERICAN PEOPLE



DP WORLD

- Approximately 4,000 port workers at port of Maputo excluding seafarers, truckers and other workers
- Limited access to health and HIV services including health education
- Mobile populations, as well as port workers and their families, generally underserved by health and development services
- Higher HIV prevalence rates than surrounding areas and national averages; dearth of services for other health issues including malaria and tuberculosis
- Despite port authority workplace programs, low levels of condom use; women lack condom negotiation skills

UNAIDS. "Mobility, Migration and Vulnerability to HIV along the Ports of the Red Sea and the Gulf of Aden." Geneva, September 2010; International Maritime Organization. "Assessment of the Impact of HIV and AIDS in the Port of Durban." London, September 2009; ROADS assessments, Port of Dar es Salaam (2007), Port of Djibouti (2010), Port of Mozambique (2010), Nairobi.

ROADS Project



- Extends health and development services to underserved, most-at-risk mobile and community populations along ECSCA transport corridors and waterways
- Builds capacity of indigenous partners to design, implement and manage programming of their own design over the long term
- Identifies, tests and diffuses innovations throughout sub-Saharan Africa





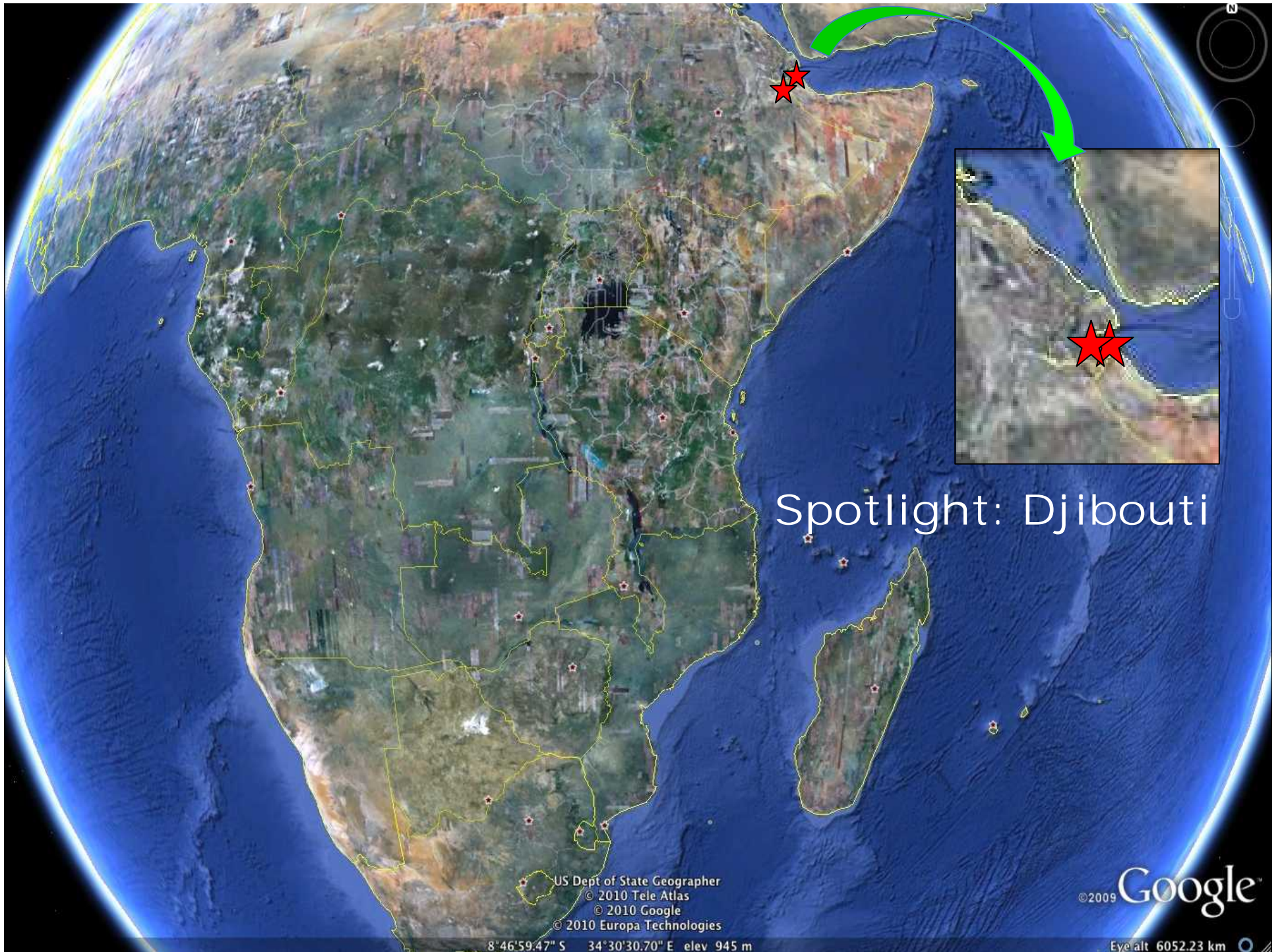
ROADS Sites
December 2011

US Dept of State Geographer
© 2010 Tele Atlas
© 2010 Google
© 2010 Europa Technologies

8°46'59.47" S 34°30'30.70" E elev 945 m

©2009 Google

Eye/alt 6052.23 km



Spotlight: Djibouti

US Dept of State Geographer
© 2010 Tele Atlas
© 2010 Google
© 2010 Europa Technologies

©2009 Google

8°46'59.47" S 34°30'30.70" E elev 945 m

Eyealt 6052.23 km

Djibouti: Small Country, Big Challenges



USAID
FROM THE AMERICAN PEOPLE



DP WORLD

- Population: 857,902
- Population growth: 2.4%
- Life expectancy: 55
- Living under poverty line: 74%
- Unemployment: 60%
- Urbanization: 85%
- Literacy rate: 52.5%
- Primary school completion rate: 54%
- Global acute malnutrition rate: 17-34%
- Maternal mortality: 546/100,000
- Under 5 mortality: 94/1000
- HIV prevalence rate: 2.7%*
- TB prevalence rate: 1100/100,000

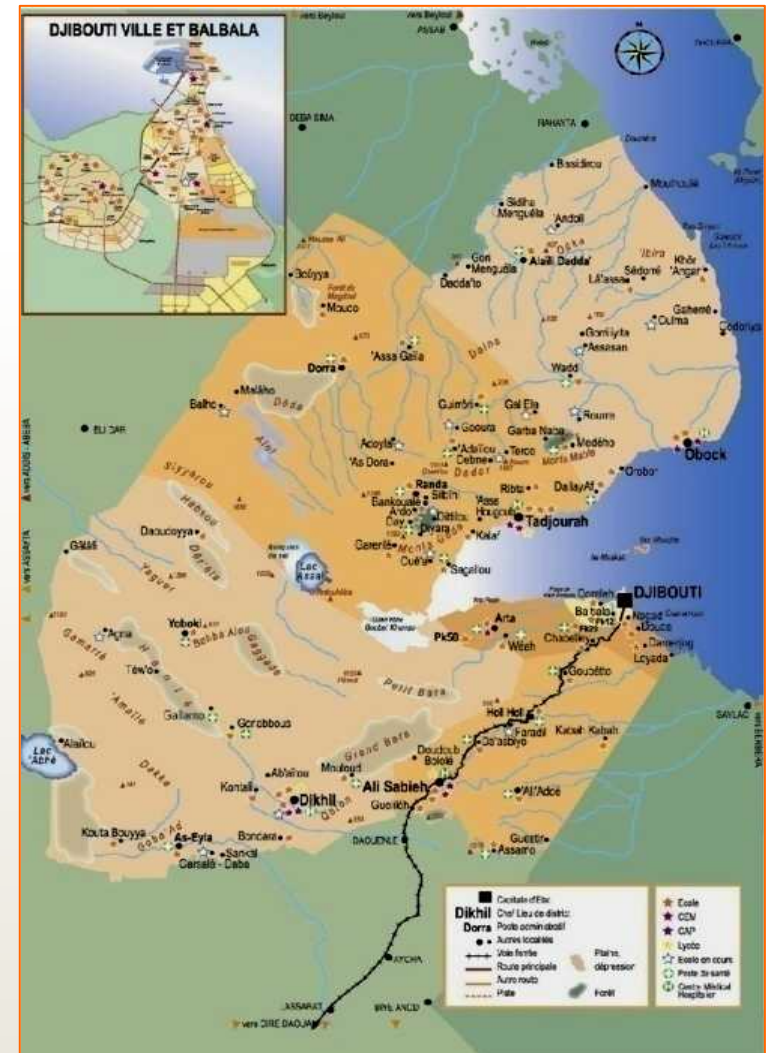
*Government of Djibouti development indicators



Djibouti: Scarce Resource Base



- **Human Capacity:**
 - ✓ Lack of a skilled and healthy workforce
 - ✓ Khat
- **Precarious livelihoods:**
 - ✓ Food insecurity: lack of arable land
 - ✓ Livestock: annual mortality rates are 50-70%
 - ✓ Water supplies are extremely scarce
- **Economic dependence:**
 - ✓ 100% of goods imported
 - ✓ Increased urban migration
- **Instability in neighboring countries:**
 - ✓ Increased influx of refugees
 - ✓ Dangerous, disputed and porous borders



Djibouti: A Strategic Position



- Shares history, culture and kinship with Somalia, Yemen, Eritrea and Ethiopia
- Only viable deep water port in the region
- 90% of all Ethiopia's imports, including food aid, pass through Djibouti's port (approx. 1,000 Ethiopian trucks enter the country each day)
- Hosts the only US military base in sub-Saharan Africa
- Hosts Intergovernmental Authority on Development (IGAD) headquarters
- Hosts Somali Peace Talks



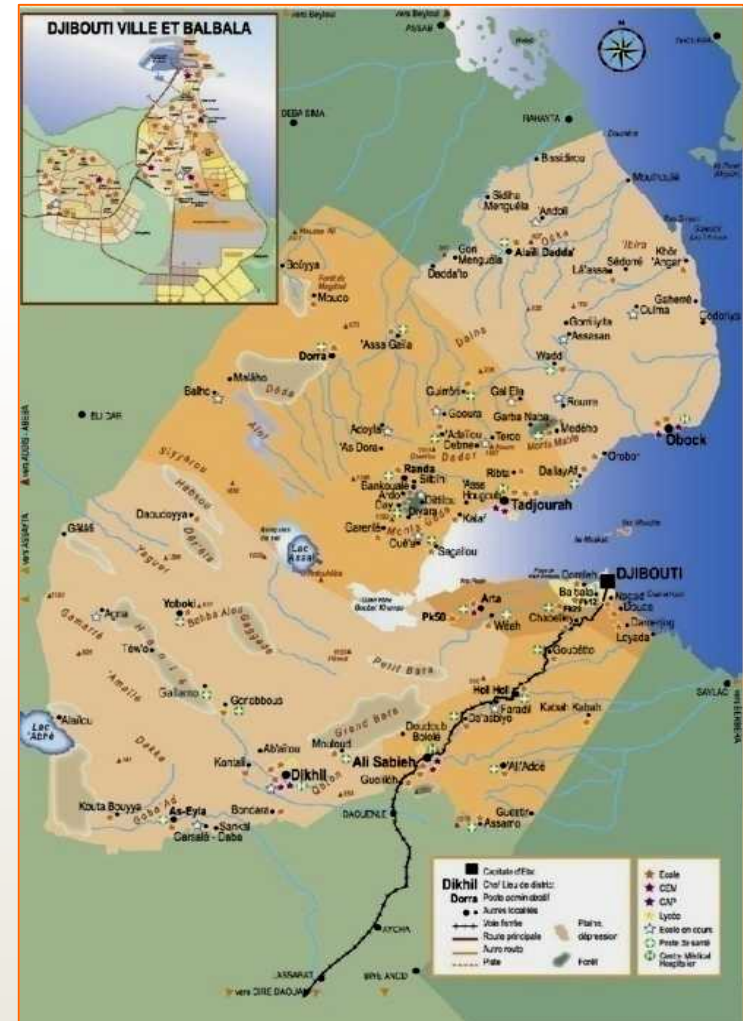
Health-Development-Security Nexus



USAID
FROM THE AMERICAN PEOPLE



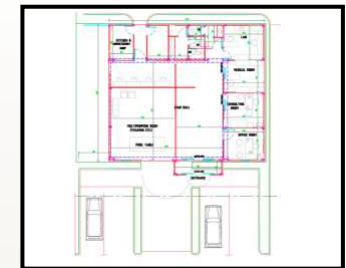
- Governments, industry and their partners recognize that economic disparity and poor access to health and social services undermine national and regional security
- US Government has made an unparalleled commitment to African health and development
- Increasing focus on promoting strong country ownership and leadership
- Public-private partnerships (PPPs) are a key pillar of President Obama's Global Health Initiative



USAID-Dubai Ports World- FHI 360/ROADS Partnership



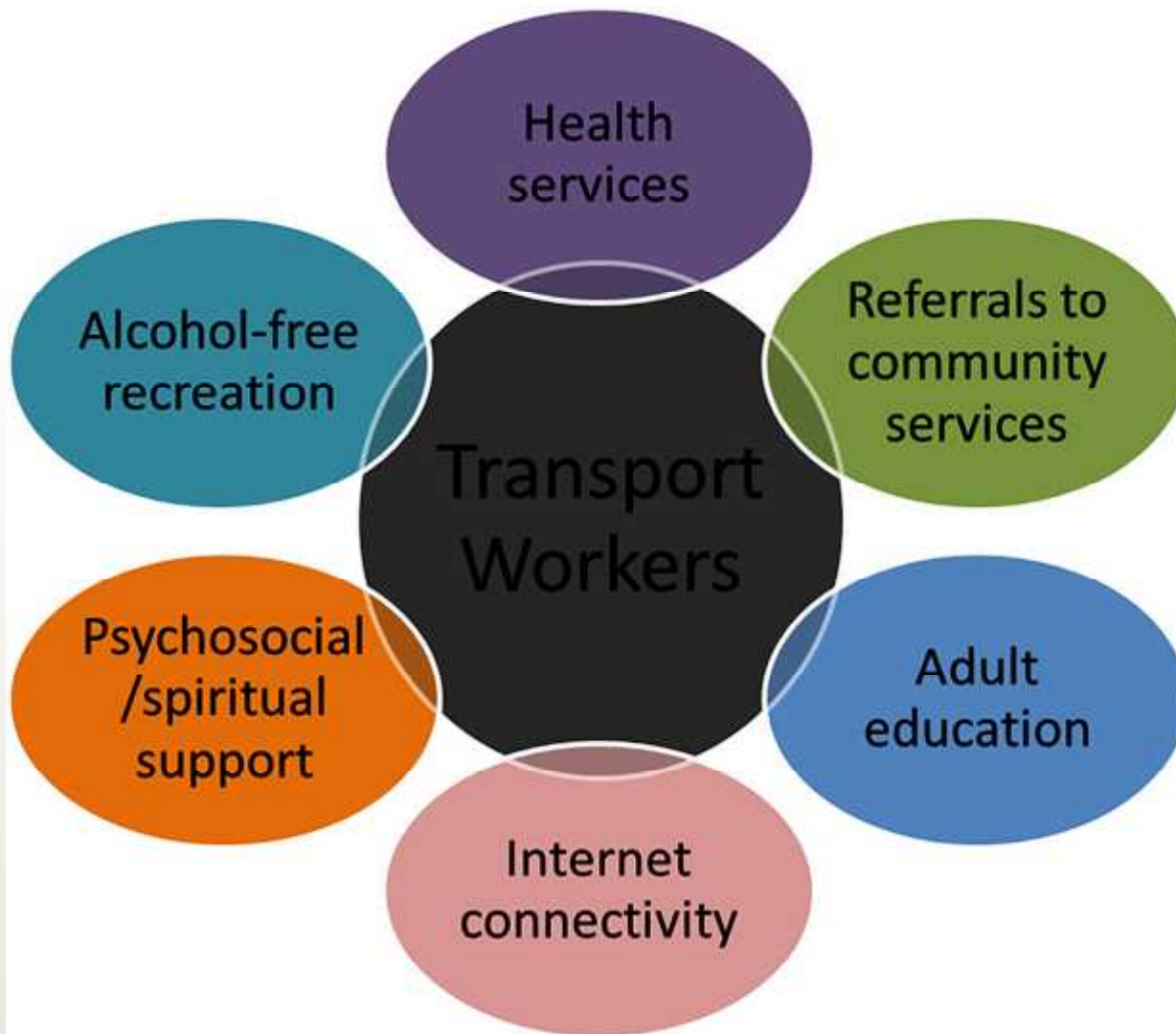
- DP World is demonstrating long-term commitment to the health development of its host countries
- Establishing a *SafeTStop* Community Center near the port:
 - ✓ DP World - contributing US\$100,000 to establish the Center
 - ✓ USAID - funding technical and management support through ROADS
 - ✓ FHI 360 - preparing site for construction
 - ✓ Government of Djibouti - providing health care workers; will take on full management within 2 years
- Offer an array of health and social services:
 - ✓ Malaria, TB, respiratory infections, first aid, HIV education, counseling and testing, linkages to other health and social services
 - ✓ Training for personal and professional development (e.g., language classes, computer literacy)
 - ✓ Recreation (e.g., satellite TV, billiards)
- ROADS partners adapting this model at ports of Maputo and Dakar



Services for Transport Workers



USAID
FROM THE AMERICAN PEOPLE



SafeTStop Community Center



ROADS

Roads to a Healthy
Future (ROADS II)

FHI with DAI, Howard
University/PACE
Center, JHPIEGO,
Johns Hopkins
University/Center for
Communication
Programs, North Star
Alliance, PATH,
Solidarity Center, Voice
for Humanity

The Chancery, 2nd Fl.
Valley Road
Nairobi, Kenya
Tel: 254-20-271-3913
Fax: 254-20-272-6130

Postcard from the Road

Highlights from the ROADS II Project

Joining with the Private Sector to Safeguard Health in Djibouti

DJIBOUTIVILLE, Djibouti—With its strategic location at the junction of the Red Sea and the Gulf of Aden, Djibouti is an increasingly important hub for international trade and commerce. The Port of Djibouti, managed by Dubai Ports (DP) World, is one of the busiest in Africa, attracting transport workers not only from Djibouti but from neighboring Ethiopia and points beyond. Up to 800 Ethiopian trucks visit the port each day. In a first-of-its-kind alliance to protect the health of Djiboutian and Ethiopian transport workers, FHI has joined with the Government of the Republic of Djibouti, DP World and USAID East Africa to establish a new SafeTStop Community Center at PK 12, a bustling stop-over community for truck drivers ferrying goods to and from the port. Per a Global Development Alliance signed by the four parties at Djibouti's Ministry of Foreign Affairs on July 12, 2010, DP World will fund and oversee construction of the 1,600-square-foot center, which will be operated jointly by the Djiboutian government and ROADS II. "This groundbreaking partnership brings both public and private sector resources together to target a key development challenge in Djibouti—health care along the transport corridor," U.S. Ambassador to Djibouti James C. Swan said at the signing ceremony. Building on activities initiated by ROADS in PK 12 in 2006, services will include basic health care; HIV education, counseling and testing; and referral for community- and facility-based services as needed. The center—to be branded as a SafeTStop in line with USAID's regional transport corridor initiative—will also offer internet services for e-learning and to help mobile workers stay in touch with their families. Recreational activities will be offered to draw workers away from environments that may put them at risk. "This alliance will immediately benefit thousands of people in the Djiboutian and Ethiopian transport sector, their families and members of surrounding communities," said Mohammed Sharaf, CEO of DP World. "The program is part of DP World's wider commitment to development of the communities in which we operate." USAID, ROADS II, DP World and partner companies are in discussions to expand this strategic partnership to other African countries where DP World is managing port operations. (July 29, 2010)



Dubai Ports World will fund and oversee construction of a new SafeTStop Community Center at PK 12.

For more information, contact:
Dorothy Muroki, dmuroki@fhi.org
Robert Ritzenhaller, rritzenhaller@fhi.org



Somaliland and Puntland



- DP World is interested in extending its PPP with USAID, FHI 360 and other agencies to promote on-shore development
- Somaliland and Puntland are key priorities:
 - ✓ Development challenges
 - ✓ Strong trade links with other countries in region
 - ✓ Recruitment areas for maritime piracy (particularly Puntland)
 - ✓ DP World has strong links with government leadership in Puntland, including MoH
- Through its Port Security and Livelihoods Initiative, DP World has set aside an initial US\$400,000 for a public-private partnership



ROADS Lessons Learned in Public-Private Partnerships

- Many businesses are eager to show commitment to the development of host countries and are looking for partners
- To go beyond one-off public relations activities, PPPs must be aligned with the long-term goals of all parties
- PPPs enhance sustainability of activities benefiting host populations
- The most effective PPPs draw on the comparative advantages of each partner
- Private companies generally move faster than government agencies and international NGOs





Asante Sana

Amesegënallô

Thank you!

Obrigado

Merci beaucoup

Shukran